

GDF1 Rabbit pAb

CatalogNo: YN2894

| Key Features

Host Species

- Rabbit

Reactivity

- Human, Mouse

Applications

- WB, ELISA

MW

- 40kD (Observed)

Isotype

- IgG

| Recommended Dilution Ratios

WB 1:500-2000

ELISA 1:5000-20000

| Storage

Storage* -15°C to -25°C/1 year (Do not lower than -25°C)

Formulation Liquid in PBS containing 50% glycerol, 0.5% BSA and 0.02% sodium azide.

| Basic Information

Clonality Polyclonal

| Immunogen Information

Immunogen Synthesized peptide derived from part region of human protein AA range: 321-370

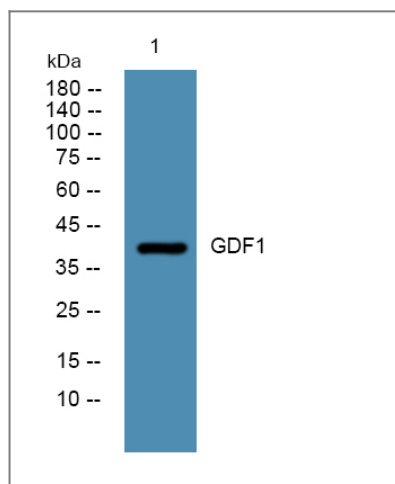
Specificity GDF1 Polyclonal Antibody detects endogenous levels of protein.

| Target Information

Gene name GDF1

Protein Name	Embryonic growth/differentiation factor 1 (GDF-1)		
	Organism	Gene ID	UniProt ID
	Human	2657;	P27539;
	Mouse		P20863;
Cellular Localization	Secreted.		
Tissue specificity	Expressed in the brain.		
Function	<p>Function:May be either a bona fide (dihydro)ceramide synthase or a modulator of its activity. When overexpressed in cells is involved in the production of sphingolipids containing mainly one fatty acid donor (N-linked stearyl- (C18) ceramide) in a fumonisin B1-independent manner.,Function:May mediate cell differentiation events during embryonic development.,miscellaneous:This protein is produced by a bicistronic gene which also produces the GDF1 protein from a non-overlapping reading frame.,miscellaneous:This protein is produced by a bicistronic gene which also produces the LASS1 protein from a non-overlapping reading frame.,similarity:Belongs to the TGF-beta family.,similarity:Contains 1 TLC (TRAM/LAG1/CLN8) domain.,subcellular location:Isoform 1 may recycle from the Golgi to the endoplasmic reticulum.,subunit:Homodimer; disulfide-linked.,tissue specificity:Expressed in the brain.,</p>		

Validation Data



Western blot analysis of lysates from SW480 cells, primary antibody was diluted at 1:1000, 4° over night

Contact information

Orders: order@immunoway.com
 Support: tech@immunoway.com
 Telephone: 877-594-3616 (Toll Free), 408-747-0185
 Website: <http://www.immunoway.com>
 Address: 2200 Ringwood Ave San Jose, CA 95131 USA



Please scan the QR code to access additional product information:
GDF1 Rabbit pAb

