

## FAT2 Rabbit pAb

CatalogNo: YN2892

### | Key Features

#### Host Species

- Rabbit

#### Reactivity

- Human, Mouse, Rat

#### Applications

- IHC, IF

#### MW

- 478kD (Observed)

#### Isotype

- IgG

### | Recommended Dilution Ratios

IHC 1:50-300

IF 1:50-200

### | Storage

**Storage\*** -15°C to -25°C/1 year (Do not lower than -25°C)

**Formulation** Liquid in PBS containing 50% glycerol, and 0.02% sodium azide.

### | Basic Information

**Clonality** Polyclonal

### | Immunogen Information

**Immunogen** Synthesized peptide derived from part region of human protein

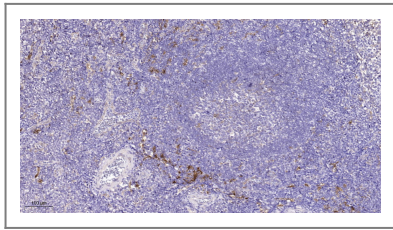
**Specificity** FAT2 Polyclonal Antibody detects endogenous levels of protein.

### | Target Information

**Gene name** FAT2 CDHF8 KIAA0811 MEGF1

<b>Protein Name</b>	Protocadherin Fat 2 (hFat2) (Cadherin family member 8) (Multiple epidermal growth factor-like domains protein 1) (Multiple EGF-like domains protein 1)		
	<b>Organism</b>	<b>Gene ID</b>	<b>UniProt ID</b>
	Human	<a href="#">2196;</a>	<a href="#">Q9NYQ8;</a>
	Mouse		<a href="#">Q5F226;</a>
	Rat		<a href="#">O88277;</a>
<b>Cellular Localization</b>	Cell membrane ; Single-pass type I membrane protein . Cell junction . Golgi apparatus, trans-Golgi network . Localized at adhesion zippers (early state of adherens junctions) of keratinocytes. .		
<b>Tissue specificity</b>	Expressed in epidermal keratinocytes, infant brain, cerebellum, and also in a variety of tumors, such as pancreatic cancer, diffuse type gastric cancer, ovarian cancer, esophageal cancer, skin squamous cell carcinoma, head and neck cancer. Not expressed in melanoma cell line A375 cells, normal epidermal melanocytes or normal dermal fibroblasts. Expressed in epidermal keratinocytes and squamous cell carcinoma (at protein level).		
<b>Function</b>	similarity:Contains 1 laminin G-like domain.,similarity:Contains 2 EGF-like domains.,similarity:Contains 32 cadherin domains.,		

## Validation Data



Immunohistochemical analysis of paraffin-embedded human tonsil. 1, Tris-EDTA,pH9.0 was used for antigen retrieval. 2 Antibody was diluted at 1:200(4° overnight.3,Secondary antibody was diluted at 1:200(room temperature, 45min).

## Contact information

Orders: [order@immunoway.com](mailto:order@immunoway.com)  
 Support: [tech@immunoway.com](mailto:tech@immunoway.com)  
 Telephone: 877-594-3616 (Toll Free), 408-747-0185  
 Website: <http://www.immunoway.com>  
 Address: 2200 Ringwood Ave San Jose, CA 95131 USA



Please scan the QR code to access additional product information:  
**FAT2 Rabbit pAb**