

Perilipin 2 Rabbit pAb

CatalogNo: YN2883

Key Features

Host Species

- Rabbit

Reactivity

- Human, Mouse

Applications

- WB, ELISA

MW

- 48kD (Observed)

Isotype

- IgG

Recommended Dilution Ratios

WB 1:500-2000

ELISA 1:5000-20000

Storage

Storage* -15°C to -25°C/1 year (Do not lower than -25°C)

Formulation Liquid in PBS containing 50% glycerol, 0.5% BSA and 0.02% sodium azide.

Basic Information

Clonality Polyclonal

Immunogen Information

Immunogen Synthesized peptide derived from part region of human protein

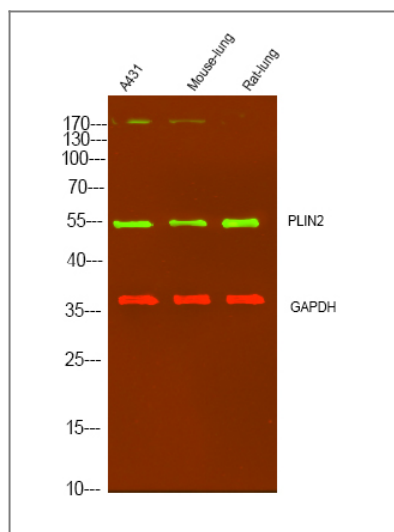
Specificity PLIN2 Polyclonal Antibody detects endogenous levels of protein.

Target Information

Gene name PLIN2 ADFP

Protein Name	Perilipin-2 (Adipophilin) (Adipose differentiation-related protein) (ADRP)		
	Organism	Gene ID	UniProt ID
	Human	123;	Q99541;
	Mouse		P43883;
Cellular Localization	Membrane ; Peripheral membrane protein . Lipid droplet .		
Tissue specificity	Milk lipid globules.		
Function	lipid transport, response to organic substance, lipid localization, response to organic cyclic substance, monocarboxylic acid transport, organic acid transport, fatty acid transport, long-chain fatty acid transport, lipid storage, response to drug, carboxylic acid transport,		

Validation Data



Western Blot analysis of various cell lysis. Primary Antibody was diluted at 1:1000. Secondary antibody(catalog#:RS23920) was diluted at 1:10000

Contact information

Orders: order@immunoway.com
 Support: tech@immunoway.com
 Telephone: 877-594-3616 (Toll Free), 408-747-0185
 Website: <http://www.immunoway.com>
 Address: 2200 Ringwood Ave San Jose, CA 95131 USA



Please scan the QR code to access additional product information:
Perilipin 2 Rabbit pAb