

## RARR2 Rabbit pAb

CatalogNo: YN2875

### Key Features

**Host Species**

- Rabbit

**Reactivity**

- Human, Mouse

**Applications**

- WB, ELISA

**MW**

- 17kD (Observed)

**Isotype**

- IgG

### Recommended Dilution Ratios

**WB 1:500-2000****ELISA 1:5000-20000**

### Storage

**Storage\*** -15°C to -25°C/1 year (Do not lower than -25°C)**Formulation** Liquid in PBS containing 50% glycerol, 0.5% BSA and 0.02% sodium azide.

### Basic Information

**Clonality** Polyclonal

### Immunogen Information

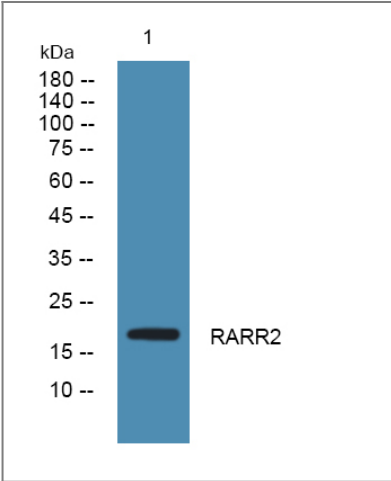
**Immunogen** Synthesized peptide derived from part region of human protein**Specificity** RARR2 Polyclonal Antibody detects endogenous levels of protein.

### Target Information

**Gene name** RARRES2 TIG2

<b>Protein Name</b>	Retinoic acid receptor responder protein 2 (RAR-responsive protein TIG2) (Tazarotene-induced gene 2 protein)		
	<b>Organism</b>	<b>Gene ID</b>	<b>UniProt ID</b>
	Human	<a href="#">5919</a> ;	<a href="#">Q99969</a> ;
	Mouse		<a href="#">Q9DD06</a> ;
<b>Cellular Localization</b>	Secreted .		
<b>Tissue specificity</b>	Expressed at the highest levels in placenta, liver, and white adipose tissue (WAT), and to a lesser extent in many other tissues such as lung, brown adipose tissue, heart, ovary, kidney, skeletal muscle and pancreas. Within WAT, expression is enriched in adipocytes as compared to the stromal vascular fraction. Expression and secretion increases dramatically with adipogenesis. Highly expressed in skin (basal and suprabasal layers of the epidermis, hair follicles and endothelial cells). Expression is elevated in numerous metabolic and inflammatory diseases including psoriasis, obesity, type 2 diabetes, metabolic syndrome and cardiovascular disease.		
<b>Function</b>	induction:Inhibited in psoriatic lesions. Activated by tazarotene in skin rafts and in the epidermis of psoriatic lesions.,tissue specificity:Highly expressed in skin (basal and suprabasal layers of the epidermis, hair follicles and endothelial cells). Also found in pancreas, liver, spleen, prostate, ovary, small intestine and colon.,		

Validation Data



Western blot analysis of lysates from SH-SY5Y cells, primary antibody was diluted at 1:1000, 4°over night

Contact information

Orders: order@immunoway.com  
Support: tech@immunoway.com  
Telephone: 877-594-3616 (Toll Free), 408-747-0185  
Website: <http://www.immunoway.com>  
Address: 2200 Ringwood Ave San Jose, CA 95131 USA



Please scan the QR code  
to access additional  
product information:  
**RARR2 Rabbit pAb**

---

For Research Use Only. Not for Use in Diagnostic Procedures.

[Antibody](#) | [ELISA Kits](#) | [Protein](#) | [Reagents](#)