

PTMA Rabbit pAb

CatalogNo: YN2871

Orthogonal Validated 

Key Features

Host Species

- Rabbit

Reactivity

- Human, Mouse

Applications

- WB, ELISA

MW

- 12kD (Observed)

Isotype

- IgG

Recommended Dilution Ratios

WB 1:500-2000**ELISA 1:5000-20000**

Storage

Storage*

-15°C to -25°C/1 year (Do not lower than -25°C)

Formulation

Liquid in PBS containing 50% glycerol, 0.5% BSA and 0.02% sodium azide.

Basic Information

Clonality

Polyclonal

Immunogen Information

Immunogen

Synthesized peptide derived from part region of human protein AA range: 1-50

Specificity

PTMA Polyclonal Antibody detects endogenous levels of protein.

Target Information

Gene name

PTMA TMSA

Protein Name Prothymosin alpha [Cleaved into: Thymosin alpha-1]

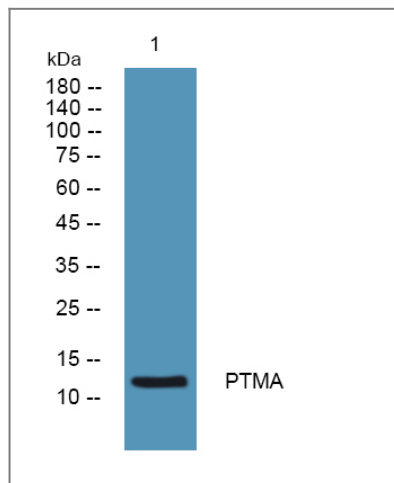
Organism	Gene ID	UniProt ID
Human	5757;	P06454;
Mouse		P26350;
Rat		P06302;

Cellular Localization Nucleus.

Tissue specificity Blood,Brain,Cerebellum,Cervix,Epithelium,Fetal thymus,Liver,Lung,Pancreas,PNS,Prima

Function Function:Prothymosin alpha may mediate immune function by conferring resistance to certain opportunistic infections.,PTM:Covalently linked to a small RNA of about 20 nucleotides.,similarity:Belongs to the pro/parathymosin family.,

Validation Data



Western blot analysis of lysates from Jurkat cells, primary antibody was diluted at 1:1000, 4° over night

Contact information

Orders: order@immunoway.com
Support: tech@immunoway.com
Telephone: 877-594-3616 (Toll Free), 408-747-0185
Website: <http://www.immunoway.com>
Address: 2200 Ringwood Ave San Jose, CA 95131 USA



Please scan the QR code to access additional product information:
PTMA Rabbit pAb