

## GPC39 Rabbit pAb

CatalogNo: YN2788

### | Key Features

#### Host Species

- Rabbit

#### Reactivity

- Human

#### Applications

- WB,ELISA

#### MW

- 29kD (Observed)

#### Isotype

- IgG

### | Recommended Dilution Ratios

**WB 1:500-2000**

**ELISA 1:5000-20000**

### | Storage

**Storage\*** -15°C to -25°C/1 year(Do not lower than -25°C)

**Formulation** Liquid in PBS containing 50% glycerol,0.5% BSA and 0.02% sodium azide.

### | Basic Information

**Clonality** Polyclonal

### | Immunogen Information

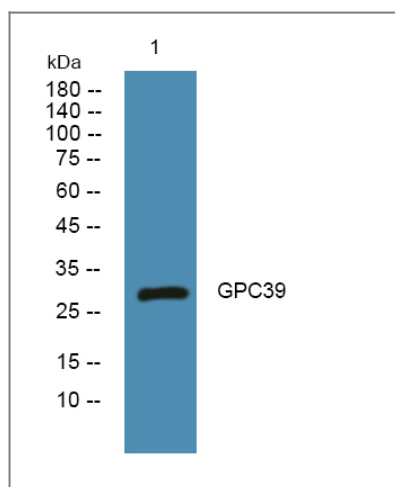
**Immunogen** Synthesized peptide derived from human protein . at AA range: 120-200

**Specificity** GPC39 Polyclonal Antibody detects endogenous levels of protein.

### | Target Information

<b>Protein Name</b>	Putative G-protein coupled receptor GPCR39 (hGPCR39)		
	<b>Organism</b>	<b>Gene ID</b>	<b>UniProt ID</b>
	Human		<a href="#">Q8NGA4</a> ;
<b>Cellular Localization</b>	Cell membrane; Multi-pass membrane protein.		

## Validation Data



Western blot analysis of lysates from PC12 cells, primary antibody was diluted at 1:1000, 4° over night

## Contact information

Orders: [order@immunoway.com](mailto:order@immunoway.com)  
 Support: [tech@immunoway.com](mailto:tech@immunoway.com)  
 Telephone: 877-594-3616 (Toll Free), 408-747-0185  
 Website: <http://www.immunoway.com>  
 Address: 2200 Ringwood Ave San Jose, CA 95131 USA



Please scan the QR code to access additional product information:  
**GPCR39 Rabbit pAb**

For Research Use Only. Not for Use in Diagnostic Procedures.

[Antibody](#) | [ELISA Kits](#) | [Protein](#) | [Reagents](#)