

## OR7A2 Rabbit pAb

CatalogNo: YN2772

### Key Features

#### Host Species

- Rabbit

#### Reactivity

- Human

#### Applications

- WB,ELISA

#### MW

- 34kD (Observed)

#### Isotype

- IgG

### Recommended Dilution Ratios

**WB 1:500-2000**

**ELISA 1:5000-20000**

### Storage

**Storage\*** -15°C to -25°C/1 year(Do not lower than -25°C)

**Formulation** Liquid in PBS containing 50% glycerol,0.5% BSA and 0.02% sodium azide.

### Basic Information

**Clonality** Polyclonal

### Immunogen Information

**Immunogen** Synthesized peptide derived from human protein . at AA range: 170-250

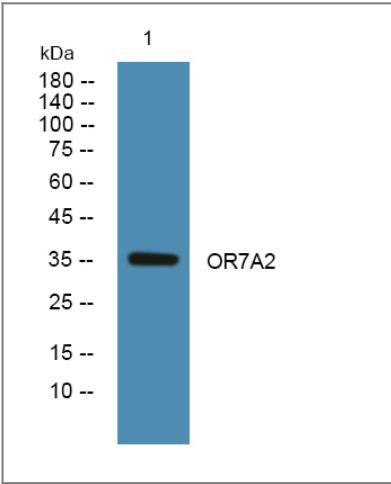
**Specificity** OR7A2 Polyclonal Antibody detects endogenous levels of protein.

### Target Information

**Gene name** OR7A2P OR7A2 OR7A7

<b>Protein Name</b>	Putative olfactory receptor 7A2 (Putative olfactory receptor 7A7)		
	<b>Organism</b>	<b>Gene ID</b>	<b>UniProt ID</b>
	Human		<a href="#">Q8NGA2</a> ;
<b>Cellular Localization</b>	Cell membrane; Multi-pass membrane protein.		
<b>Function</b>	Caution:Could be the product of a pseudogene.,Function:Odorant receptor .,similarity:Belongs to the G-protein coupled receptor 1 family.,		

| Validation Data



Western blot analysis of lysates from SH-SY5Y cells, primary antibody was diluted at 1:1000, 4°over night

| Contact information

Orders:           order@immunoway.com  
Support:         tech@immunoway.com  
Telephone:       877-594-3616 (Toll Free), 408-747-0185  
Website:         http://www.immunoway.com  
Address:         2200 Ringwood Ave San Jose, CA 95131 USA



Please scan the QR code to access additional product information:  
**OR7A2 Rabbit pAb**