

## O10A2 Rabbit pAb

CatalogNo: YN2743

### Key Features

**Host Species**

- Rabbit

**Reactivity**

- Human

**Applications**

- WB,ELISA

**MW**

- 33kD (Observed)

**Isotype**

- IgG

### Storage

**Storage\*** -15°C to -25°C/1 year(Do not lower than -25°C)**Formulation** Liquid in PBS containing 50% glycerol,0.5% BSA and 0.02% sodium azide.

### Recommended Dilution Ratios

**WB 1:500-2000****ELISA 1:5000-20000**

### Basic Information

**Clonality** Polyclonal

### Immunogen Information

**Immunogen** Synthesized peptide derived from human protein . at AA range: 220-300**Specificity** O10A2 Polyclonal Antibody detects endogenous levels of protein.

### Target Information

**Gene name** OR10A2 OR10A2P

**Protein Name** Olfactory receptor 10A2 (HP4) (Olfactory receptor OR11-86)

**Organism**

Human

**Gene ID**

[341276](#);

**UniProt ID**

[Q9H208](#);

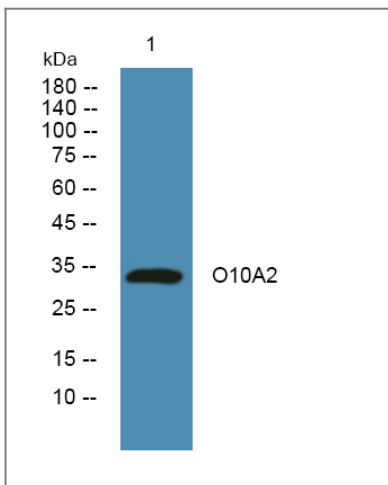
**Cellular Localization**

Cell membrane; Multi-pass membrane protein.

**Function**

Function:Odorant receptor .,similarity:Belongs to the G-protein coupled receptor 1 family.,

## Validation Data



Western blot analysis of lysates from DU145 cells, primary antibody was diluted at 1:1000, 4°over night

## Contact information

Orders: [order@immunoway.com](mailto:order@immunoway.com)  
Support: [tech@immunoway.com](mailto:tech@immunoway.com)  
Telephone: 877-594-3616 (Toll Free), 408-747-0185  
Website: <http://www.immunoway.com>  
Address: 2200 Ringwood Ave San Jose, CA 95131 USA



Please scan the QR code to access additional product information:  
**O10A2 Rabbit pAb**

For Research Use Only. Not for Use in Diagnostic Procedures.

[Antibody](#) | [ELISA Kits](#) | [Protein](#) | [Reagents](#)