

# O11A1 Rabbit pAb

CatalogNo: YN2719

## Key Features

### Host Species

- Rabbit

### Reactivity

- Human

### Applications

- WB,ELISA

### MW

- 34kD (Observed)

### Isotype

- IgG

## Storage

**Storage\*** -15°C to -25°C/1 year(Do not lower than -25°C)

**Formulation** Liquid in PBS containing 50% glycerol,0.5% BSA and 0.02% sodium azide.

## Recommended Dilution Ratios

**WB 1:500-2000**

**ELISA 1:5000-20000**

## Basic Information

**Clonality** Polyclonal

## Immunogen Information

**Immunogen** Synthesized peptide derived from human protein . at AA range: 230-310

**Specificity** O11A1 Polyclonal Antibody detects endogenous levels of protein.

## Target Information

**Gene name** OR11A1 OR11A2

**Protein Name** Olfactory receptor 11A1 (Hs6M1-18) (Olfactory receptor 11A2) (Olfactory receptor OR6-30)

**Organism**

**Gene ID**

**UniProt ID**

Human

[26531](#);

[Q9GZK7](#);

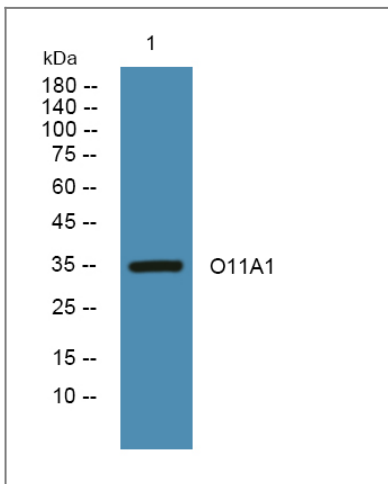
**Cellular Localization**

Cell membrane; Multi-pass membrane protein.

**Tissue specificity** Testis,

**Function** Function:Odorant receptor .,similarity:Belongs to the G-protein coupled receptor 1 family.,

## Validation Data



Western blot analysis of lysates from DU145 cells, primary antibody was diluted at 1:1000, 4°over night

## Contact information

Orders: [order@immunoway.com](mailto:order@immunoway.com)  
Support: [tech@immunoway.com](mailto:tech@immunoway.com)  
Telephone: 877-594-3616 (Toll Free), 408-747-0185  
Website: <http://www.immunoway.com>  
Address: 2200 Ringwood Ave San Jose, CA 95131 USA



Please scan the QR code to access additional product information:  
**O11A1 Rabbit pAb**

For Research Use Only. Not for Use in Diagnostic Procedures.

[Antibody](#) | [ELISA Kits](#) | [Protein](#) | [Reagents](#)