

## NPFF1 Rabbit pAb

CatalogNo: YN2712

### Key Features

#### Host Species

- Rabbit

#### Reactivity

- Human,Rat

#### Applications

- WB,ELISA

#### MW

- 47kD (Observed)

#### Isotype

- IgG

### Recommended Dilution Ratios

**WB 1:500-2000**

**ELISA 1:5000-20000**

### Storage

**Storage\*** -15°C to -25°C/1 year(Do not lower than -25°C)

**Formulation** Liquid in PBS containing 50% glycerol, and 0.02% sodium azide.

### Basic Information

**Clonality** Polyclonal

### Immunogen Information

**Immunogen** Synthesized peptide derived from human protein . at AA range: 300-380

**Specificity** NPFF1 Polyclonal Antibody detects endogenous levels of protein.

### Target Information

**Gene name** NPFFR1 GPR147 NPFF1

**Protein Name** Neuropeptide FF receptor 1 (G-protein coupled receptor 147) (RFamide-related peptide receptor OT7T022)

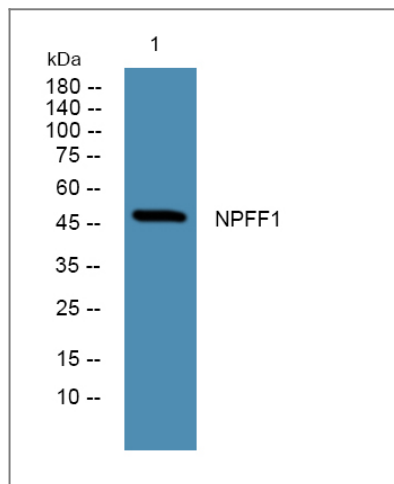
Organism	Gene ID	UniProt ID
Human	<a href="#">64106</a> ;	<a href="#">Q9GZQ6</a> ;
Rat		<a href="#">Q9EP86</a> ;

**Cellular Localization** Cell membrane; Multi-pass membrane protein.

**Tissue specificity** Spinal cord,

**Function** Function:Receptor for NPAF (A-18-F-amide) and NPFF (F-8-F-amide) neuropeptides, also known as morphine-modulating peptides. Can also be activated by a variety of naturally occurring or synthetic FMRF-amide like ligands. This receptor mediates its action by association with G proteins that activate a phosphatidylinositol-calcium second messenger system.,similarity:Belongs to the G-protein coupled receptor 1 family.,

## Validation Data



Western blot analysis of lysates from K562 cells, primary antibody was diluted at 1:1000, 4°over night

## Contact information

Orders: [order@immunoway.com](mailto:order@immunoway.com)  
Support: [tech@immunoway.com](mailto:tech@immunoway.com)  
Telephone: 877-594-3616 (Toll Free), 408-747-0185  
Website: <http://www.immunoway.com>  
Address: 2200 Ringwood Ave San Jose, CA 95131 USA



Please scan the QR code to access additional product information:  
**NPFF1 Rabbit pAb**

