

## PF2R Rabbit pAb

CatalogNo: YN2682

### | Key Features

#### Host Species

- Rabbit

#### Reactivity

- Human,Rat,Mouse

#### Applications

- WB,ELISA

#### MW

- 39kD (Observed)

#### Isotype

- IgG

### | Recommended Dilution Ratios

**WB 1:500-2000**

**ELISA 1:5000-20000**

### | Storage

**Storage\*** -15°C to -25°C/1 year(Do not lower than -25°C)

**Formulation** Liquid in PBS containing 50% glycerol, and 0.02% sodium azide.

### | Basic Information

**Clonality** Polyclonal

### | Immunogen Information

**Immunogen** Synthesized peptide derived from human protein . at AA range: 40-120

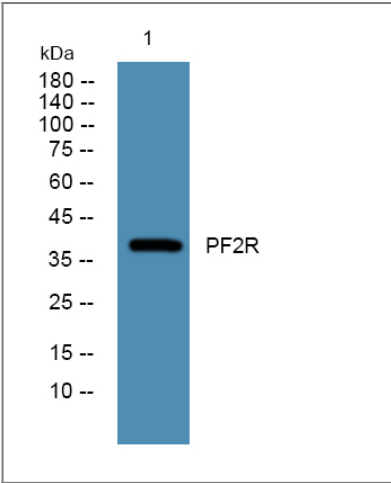
**Specificity** PF2R Polyclonal Antibody detects endogenous levels of protein.

### | Target Information

**Gene name** PTGFR

<b>Protein Name</b>	Prostaglandin F2-alpha receptor (PGF receptor) (PGF2-alpha receptor) (Prostanoid FP receptor)		
	<b>Organism</b>	<b>Gene ID</b>	<b>UniProt ID</b>
	Human	<a href="#">5737;</a>	<a href="#">P43088;</a>
	Mouse		<a href="#">P43117;</a>
	Rat		<a href="#">P43118;</a>
<b>Cellular Localization</b>	Cell membrane; Multi-pass membrane protein.		
<b>Tissue specificity</b>	Eye.		
<b>Function</b>	Function:Receptor for prostaglandin F2-alpha (PGF2-alpha). The activity of this receptor is mediated by G proteins which activate a phosphatidylinositol-calcium second messenger system. Initiates luteolysis in the corpus luteum.,similarity:Belongs to the G-protein coupled receptor 1 family.,		

| Validation Data



Western blot analysis of lysates from DU145 cells, primary antibody was diluted at 1:1000, 4°over night

| Contact information

Orders:           order@immunoway.com  
Support:         tech@immunoway.com  
Telephone:       877-594-3616 (Toll Free), 408-747-0185  
Website:         http://www.immunoway.com  
Address:         2200 Ringwood Ave San Jose, CA 95131 USA



Please scan the QR code to access additional product information:  
**PF2R Rabbit pAb**

