

P2RY1 Rabbit pAb

CatalogNo: YN2673

Key Features

Host Species

- Rabbit

Reactivity

- Human,Rat,Mouse

Applications

- WB,ELISA

MW

- 41kD (Observed)

Isotype

- IgG

Recommended Dilution Ratios

WB 1:500-2000

ELISA 1:5000-20000

Storage

Storage* -15°C to -25°C/1 year(Do not lower than -25°C)

Formulation Liquid in PBS containing 50% glycerol,0.5% BSA and 0.02% sodium azide.

Basic Information

Clonality Polyclonal

Immunogen Information

Immunogen Synthesized peptide derived from human protein . at AA range: 130-210

Specificity P2RY1 Polyclonal Antibody detects endogenous levels of protein.

Target Information

Gene name P2RY1

Protein Name P2Y purinoceptor 1 (P2Y1) (ATP receptor) (Purinergic receptor)

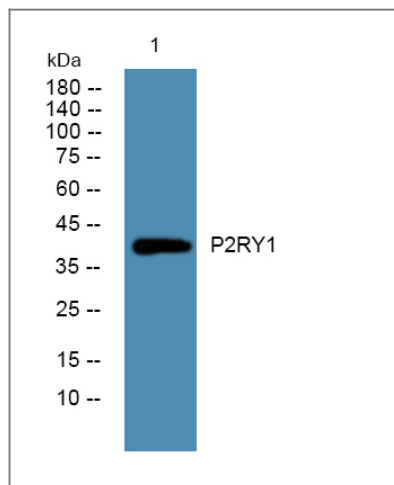
Organism	Gene ID	UniProt ID
Human	5028;	P47900;
Mouse		P49650;
Rat		P49651;

Cellular Localization Cell membrane ; Multi-pass membrane protein .

Tissue specificity Blood,Brain,Lung,Placenta,Platelet,

Function Function:Receptor for extracellular adenine nucleotides such as ATP and ADP. In platelets binding to ADP leads to mobilization of intracellular calcium ions via activation of phospholipase C, a change in platelet shape, and probably to platelet aggregation.,induction:Repressed by the P2Y1 receptor-specific antagonists A3P5PS, A3P5P and A2P5P. These inhibit calcium ion mobilization and shape change in platelets.,similarity:Belongs to the G-protein coupled receptor 1 family.,

Validation Data



Western blot analysis of lysates from PC12 cells, primary antibody was diluted at 1:1000, 4°over night

Contact information

Orders: order@immunoway.com
Support: tech@immunoway.com
Telephone: 877-594-3616 (Toll Free), 408-747-0185
Website: <http://www.immunoway.com>
Address: 2200 Ringwood Ave San Jose, CA 95131 USA



Please scan the QR code to access additional product information:
P2RY1 Rabbit pAb

