

## OR5C1 Rabbit pAb

CatalogNo: YN2646

### | Key Features

#### Host Species

- Rabbit

#### Reactivity

- Human

#### Applications

- WB,ELISA

#### MW

- 35kD (Observed)

#### Isotype

- IgG

### | Recommended Dilution Ratios

**WB 1:500-2000**

**ELISA 1:5000-20000**

### | Storage

**Storage\*** -15°C to -25°C/1 year(Do not lower than -25°C)

**Formulation** Liquid in PBS containing 50% glycerol,0.5% BSA and 0.02% sodium azide.

### | Basic Information

**Clonality** Polyclonal

### | Immunogen Information

**Immunogen** Synthesized peptide derived from human protein . at AA range: 110-190

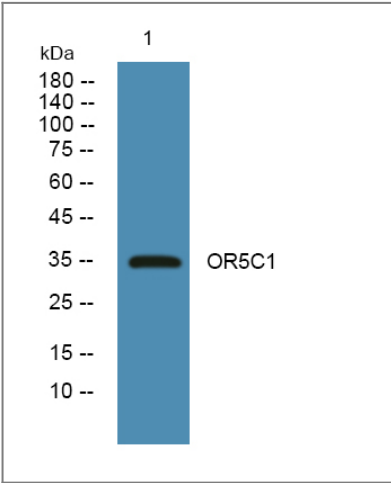
**Specificity** OR5C1 Polyclonal Antibody detects endogenous levels of protein.

### | Target Information

**Gene name** OR5C1 OR5C2P

<b>Protein Name</b>	Olfactory receptor 5C1 (Olfactory receptor 5C2) (Olfactory receptor 9-F) (OR9-F)		
	<b>Organism</b>	<b>Gene ID</b>	<b>UniProt ID</b>
	Human	<a href="#">392391</a> ;	<a href="#">Q8NGR4</a> ;
<b>Cellular Localization</b>	Cell membrane; Multi-pass membrane protein.		
<b>Tissue specificity</b>	Brain,		
<b>Function</b>	Function:Odorant receptor .,similarity:Belongs to the G-protein coupled receptor 1 family.,		

| Validation Data



Western blot analysis of lysates from HCT116 cells, primary antibody was diluted at 1:1000, 4°over night

| Contact information

Orders: order@immunoway.com  
Support: tech@immunoway.com  
Telephone: 877-594-3616 (Toll Free), 408-747-0185  
Website: http://www.immunoway.com  
Address: 2200 Ringwood Ave San Jose, CA 95131 USA



Please scan the QR code to access additional product information:  
**OR5C1 Rabbit pAb**