

OR2H1 Rabbit pAb

CatalogNo: YN2610

Key Features

Host Species

- Rabbit

Reactivity

- Human

Applications

- WB,ELISA

MW

- 34kD (Observed)

Isotype

- IgG

Storage

Storage* -15°C to -25°C/1 year(Do not lower than -25°C)

Formulation Liquid in PBS containing 50% glycerol,0.5% BSA and 0.02% sodium azide.

Recommended Dilution Ratios

WB 1:500-2000

ELISA 1:5000-20000

Basic Information

Clonality Polyclonal

Immunogen Information

Immunogen Synthesized peptide derived from part region of human protein

Specificity OR2H1 Polyclonal Antibody detects endogenous levels of protein.

Target Information

Gene name OR2H1 OR2H6 OR2H8

Protein Name Olfactory receptor 2H1 (Hs6M1-16) (OLFR42A-9004.14/9026.2) (Olfactory receptor 2H6) (Olfactory receptor 2H8) (Olfactory receptor 6-2) (OR6-2) (Olfactory receptor OR6-32)

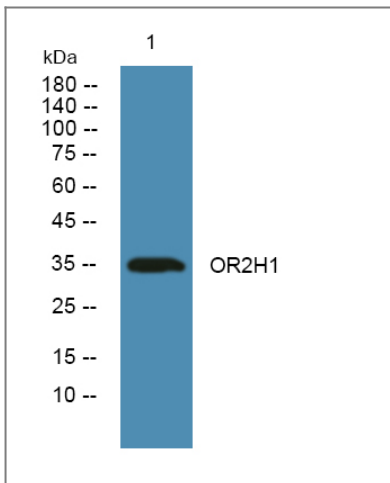
Organism	Gene ID	UniProt ID
Human	26716 ;	Q9GZK4 ;

Cellular Localization Cell membrane; Multi-pass membrane protein.

Tissue specificity Testis,

Function Function:Odorant receptor .,similarity:Belongs to the G-protein coupled receptor 1 family.,

Validation Data



Western blot analysis of lysates from HCT116 cells, primary antibody was diluted at 1:1000, 4°C over night

Contact information

Orders: order@immunoway.com
Support: tech@immunoway.com
Telephone: 877-594-3616 (Toll Free), 408-747-0185
Website: <http://www.immunoway.com>
Address: 2200 Ringwood Ave San Jose, CA 95131 USA



Please scan the QR code to access additional product information:
OR2H1 Rabbit pAb

For Research Use Only. Not for Use in Diagnostic Procedures.

[Antibody](#) | [ELISA Kits](#) | [Protein](#) | [Reagents](#)