

OR2B3 Rabbit pAb

CatalogNo: YN2607

| Key Features

Host Species

- Rabbit

Reactivity

- Human

Applications

- WB,ELISA

MW

- 34kD (Observed)

Isotype

- IgG

| Recommended Dilution Ratios

WB 1:500-2000

ELISA 1:5000-20000

| Storage

Storage* -15°C to -25°C/1 year(Do not lower than -25°C)

Formulation Liquid in PBS containing 50% glycerol, and 0.02% sodium azide.

| Basic Information

Clonality Polyclonal

| Immunogen Information

Immunogen Synthesized peptide derived from part region of human protein

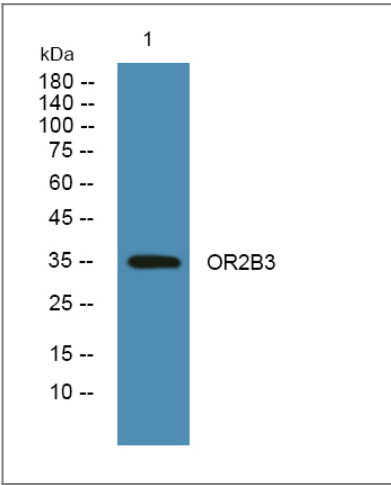
Specificity OR2B3 Polyclonal Antibody detects endogenous levels of protein.

| Target Information

Gene name OR2B3 OR2B3P

Protein Name	Putative olfactory receptor 2B3 (Hs6M1-1) (Olfactory receptor OR6-14) (OR6-4) (Olfactory receptor 6-4)		
	Organism	Gene ID	UniProt ID
	Human	442184 ;	O76000 ;
Cellular Localization	Cell membrane; Multi-pass membrane protein.		

Validation Data



Western blot analysis of lysates from K562 cells, primary antibody was diluted at 1:1000, 4°over night

Contact information

Orders: order@immunoway.com
Support: tech@immunoway.com
Telephone: 877-594-3616 (Toll Free), 408-747-0185
Website: http://www.immunoway.com
Address: 2200 Ringwood Ave San Jose, CA 95131 USA



Please scan the QR code to access additional product information:
OR2B3 Rabbit pAb