

O10P1 Rabbit pAb

CatalogNo: YN2587

Key Features

Host Species

- Rabbit

Reactivity

- Human

Applications

- WB,ELISA

MW

- 34kD (Observed)

Isotype

- IgG

Storage

Storage* -15°C to -25°C/1 year(Do not lower than -25°C)**Formulation** Liquid in PBS containing 50% glycerol,0.5% BSA and 0.02% sodium azide.

Recommended Dilution Ratios

WB 1:500-2000**ELISA 1:5000-20000**

Basic Information

Clonality Polyclonal

Immunogen Information

Immunogen Synthesized peptide derived from part region of human protein**Specificity** O10P1 Polyclonal Antibody detects endogenous levels of protein.

Target Information

Gene name OR10P1 OR10P1P OR10P2P OR10P3P

Protein Name Olfactory receptor 10P1 (Olfactory receptor 10P2) (Olfactory receptor 10P3) (Olfactory receptor OR12-7)

Organism

Human

Gene ID

[121130](#);

UniProt ID

[Q8NGE3](#);

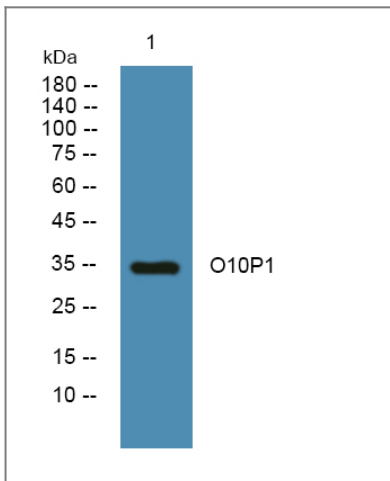
Cellular Localization

Cell membrane; Multi-pass membrane protein.

Function

Function:Odorant receptor .,similarity:Belongs to the G-protein coupled receptor 1 family.,

Validation Data



Western blot analysis of lysates from DU145 cells, primary antibody was diluted at 1:1000, 4°over night

Contact information

Orders: order@immunoway.com
Support: tech@immunoway.com
Telephone: 877-594-3616 (Toll Free), 408-747-0185
Website: <http://www.immunoway.com>
Address: 2200 Ringwood Ave San Jose, CA 95131 USA



Please scan the QR code to access additional product information:
O10P1 Rabbit pAb

For Research Use Only. Not for Use in Diagnostic Procedures.

[Antibody](#) | [ELISA Kits](#) | [Protein](#) | [Reagents](#)