

SSR5 Rabbit pAb

CatalogNo: YN2541

Key Features

Host Species

- Rabbit

Reactivity

- Human, Mouse, Rat

Applications

- WB, ELISA

MW

- 40kD (Observed)

Isotype

- IgG

Recommended Dilution Ratios

WB 1:500-2000

ELISA 1:5000-20000

Storage

Storage* -15°C to -25°C/1 year (Do not lower than -25°C)

Formulation Liquid in PBS containing 50% glycerol, 0.5% BSA and 0.02% sodium azide.

Basic Information

Clonality Polyclonal

Immunogen Information

Immunogen Synthesized peptide derived from human protein . at AA range: 270-350

Specificity SSR5 Polyclonal Antibody detects endogenous levels of protein.

Target Information

Gene name SSTR5

Protein Name Somatostatin receptor type 5 (SS-5-R) (SS5-R) (SS5R)

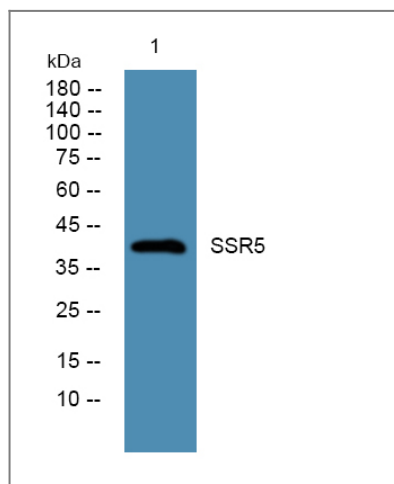
Organism	Gene ID	UniProt ID
Human	6755;	P35346;
Mouse		O08858;
Rat		P30938;

Cellular Localization Cell membrane; Multi-pass membrane protein.

Tissue specificity Adult pituitary gland, heart, small intestine, adrenal gland, cerebellum and fetal hypothalamus. No expression in fetal or adult kidney, liver, pancreas, uterus, spleen, lung, thyroid or ovary.

Function Function:Receptor for somatostatin 28 and to a lesser extent for somatostatin-14. The activity of this receptor is mediated by G proteins which inhibit adenylyl cyclase.,similarity:Belongs to the G-protein coupled receptor 1 family.,tissue specificity:Adult pituitary gland, heart, small intestine, adrenal gland, cerebellum and fetal hypothalamus. No expression in fetal or adult kidney, liver, pancreas, uterus, spleen, lung, thyroid or ovary.,

Validation Data



Western blot analysis of lysates from U2OS cells, primary antibody was diluted at 1:1000, 4°over night

Contact information

Orders: order@immunoway.com
Support: tech@immunoway.com
Telephone: 877-594-3616 (Toll Free), 408-747-0185
Website: <http://www.immunoway.com>
Address: 2200 Ringwood Ave San Jose, CA 95131 USA



Please scan the QR code to access additional product information:
SSR5 Rabbit pAb

