

GPR26 Rabbit pAb

CatalogNo: YN2523

Key Features

Host Species

- Rabbit

Reactivity

- Human, Mouse, Rat

Applications

- WB, ELISA

MW

- 37kD (Observed)

Isotype

- IgG

Recommended Dilution Ratios

WB 1:500-2000

ELISA 1:5000-20000

Storage

Storage* -15°C to -25°C/1 year (Do not lower than -25°C)

Formulation Liquid in PBS containing 50% glycerol, 0.5% BSA and 0.02% sodium azide.

Basic Information

Clonality Polyclonal

Immunogen Information

Immunogen Synthesized peptide derived from human protein . at AA range: 100-180

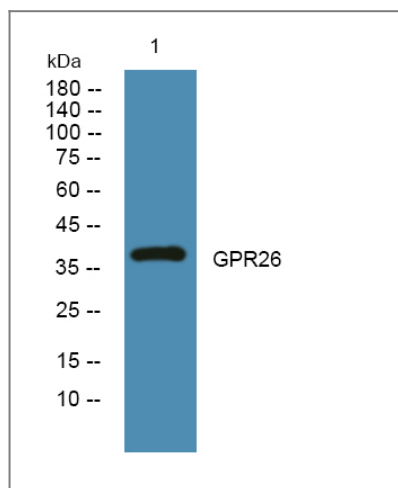
Specificity GPR26 Polyclonal Antibody detects endogenous levels of protein.

Target Information

Gene name GPR26

Protein Name	G-protein coupled receptor 26		
	Organism	Gene ID	UniProt ID
	Human	2849;	Q8NDV2;
	Mouse		Q8BZA7;
	Rat		Q9QXI3;
Cellular Localization	Cell membrane; Multi-pass membrane protein.		
Tissue specificity	Highly expressed in the CNS, the highest expression is seen in the amygdala, hippocampus and thalamus. Weak expression is detected in testis. Down-regulated in glioblastoma.		
Function	Function:Orphan receptor.,similarity:Belongs to the G-protein coupled receptor 1 family.,		

Validation Data



Western blot analysis of lysates from A431 cells, primary antibody was diluted at 1:1000, 4°over night

Contact information

Orders: order@immunoway.com
 Support: tech@immunoway.com
 Telephone: 877-594-3616 (Toll Free), 408-747-0185
 Website: <http://www.immunoway.com>
 Address: 2200 Ringwood Ave San Jose, CA 95131 USA



Please scan the QR code to access additional product information:
GPR26 Rabbit pAb