

GP148 Rabbit pAb

CatalogNo: YN2520

Key Features

Host Species

- Rabbit

Reactivity

- Human

Applications

- WB,ELISA

MW

- 38kD (Observed)

Isotype

- IgG

Recommended Dilution Ratios

WB 1:500-2000

ELISA 1:5000-20000

Storage

Storage* -15°C to -25°C/1 year(Do not lower than -25°C)

Formulation Liquid in PBS containing 50% glycerol,0.5% BSA and 0.02% sodium azide.

Basic Information

Clonality Polyclonal

Immunogen Information

Immunogen Synthesized peptide derived from human protein . at AA range: 140-220

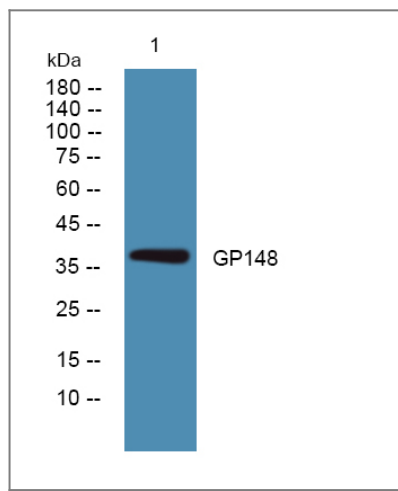
Specificity GP148 Polyclonal Antibody detects endogenous levels of protein.

Target Information

Gene name GPR148 BTR PGR6

Protein Name	Probable G-protein coupled receptor 148 (Brain and testis restricted GPCR) (G-protein coupled receptor PGR6)		
	Organism	Gene ID	UniProt ID
	Human	344561 ;	Q8TDV2 ;
Cellular Localization	Cell membrane; Multi-pass membrane protein.		
Tissue specificity	Expression restricted to nervous system and testis. Is also detected in several tumors types, most notably prostate cancer.		
Function	Function:Orphan receptor.,similarity:Belongs to the G-protein coupled receptor 1 family.,tissue specificity:Expression restricted to nervous system and testis. Is also detected in several tumors types, most notably prostate cancer.,		

Validation Data



Western blot analysis of lysates from A431 cells, primary antibody was diluted at 1:1000, 4° over night

Contact information

Orders: order@immunoway.com
 Support: tech@immunoway.com
 Telephone: 877-594-3616 (Toll Free), 408-747-0185
 Website: <http://www.immunoway.com>
 Address: 2200 Ringwood Ave San Jose, CA 95131 USA



Please scan the QR code
 to access additional
 product information:
GP148 Rabbit pAb