

## DRAM1 Rabbit pAb

CatalogNo: YN2490

### Key Features

#### Host Species

- Rabbit

#### Reactivity

- Human, Mouse

#### Applications

- WB, ELISA

#### MW

- 26kD (Observed)

#### Isotype

- IgG

### Recommended Dilution Ratios

WB 1:500-2000

ELISA 1:5000-20000

### Storage

**Storage\*** -15°C to -25°C/1 year (Do not lower than -25°C)

**Formulation** Liquid in PBS containing 50% glycerol, 0.5% BSA and 0.02% sodium azide.

### Basic Information

**Clonality** Polyclonal

### Immunogen Information

**Immunogen** Synthesized peptide derived from human protein . at AA range: 151-200

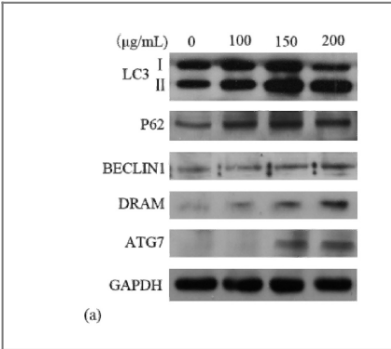
**Specificity** DRAM1 Polyclonal Antibody detects endogenous levels of protein.

### Target Information

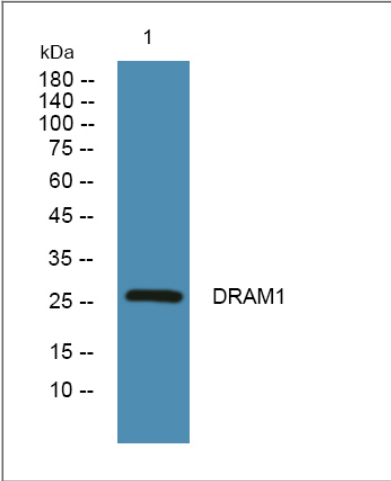
**Gene name** DRAM1 DRAM

<b>Protein Name</b>	DNA damage-regulated autophagy modulator protein 1 (Damage-regulated autophagy modulator)		
	<b>Organism</b>	<b>Gene ID</b>	<b>UniProt ID</b>
	Human	<a href="#">55332</a> ;	<a href="#">Q8N682</a> ;
	Mouse		<a href="#">Q9DC58</a> ;
<b>Cellular Localization</b>	Lysosome membrane ; Multi-pass membrane protein .		
<b>Function</b>	autophagy, apoptosis, cell death, programmed cell death, death,		

Validation Data



New fungal protein from *Pleurotus ferulae lanzi* induces AMPK-mediated autophagy and G1-phase cell cycle arrest in A549 lung cancer cells. Zhao-Kun Liu WB Human 1:250 A549 cell



Western blot analysis of lysates from SH-SY5Y cells, primary antibody was diluted at 1:1000, 4°over night

Contact information

Orders: order@immunoway.com  
Support: tech@immunoway.com  
Telephone: 877-594-3616 (Toll Free), 408-747-0185  
Website: http://www.immunoway.com  
Address: 2200 Ringwood Ave San Jose, CA 95131 USA



Please scan the QR code to access additional product information:  
**DRAM1 Rabbit pAb**

