

PDYN Rabbit pAb

CatalogNo: YN2485

Key Features

Host Species

- Rabbit

Reactivity

- Human, Mouse, Rat

Applications

- WB, ELISA

MW

- 27kD (Observed)

Isotype

- IgG

Recommended Dilution Ratios

WB 1:500-2000

ELISA 1:5000-20000

Storage

Storage* -15°C to -25°C/1 year (Do not lower than -25°C)

Formulation Liquid in PBS containing 50% glycerol, 0.5% BSA and 0.02% sodium azide.

Basic Information

Clonality Polyclonal

Immunogen Information

Immunogen Synthesized peptide derived from human protein . at AA range: 201-250

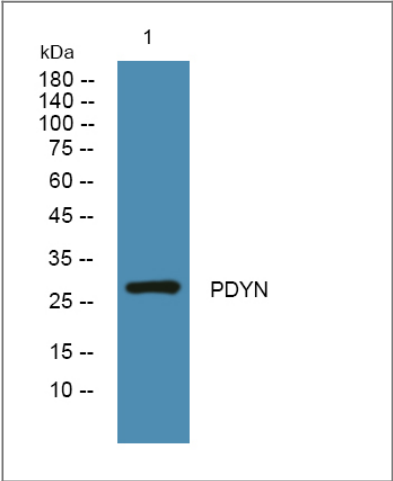
Specificity PDYN Polyclonal Antibody detects endogenous levels of protein.

Target Information

Gene name PDYN

Protein Name	Proenkephalin-B (Beta-neoendorphin-dynorphin) (Preprodynorphin) [Cleaved into: Alpha-neoendorphin; Beta-neoendorphin; Big dynorphin (Big Dyn); Dynorphin A(1-17) (Dyn-A17) (Dynorphin A); Dynorphin A(1-13); Dynorphin A(1-8); Leu-enkephalin; Rimorphin (Dynorphin B) (Dyn-B) (Dynorphin B(1-13)); Leumorphin (Dynorphin B-29)]		
	Organism	Gene ID	UniProt ID
	Human	5173 ;	P01213 ;
	Mouse		O35417 ;
	Rat		P06300 ;
Cellular Localization	Secreted.		
Tissue specificity	Brain,		
Function	Function:Dynorphin peptides differentially regulate the kappa opioid receptor. Dynorphin A(1-13) has a typical opiod activity, it is 700 times more potent than Leu-enkephalin.,Function:Leu-enkephalins compete with and mimic the effects of opiate drugs. They play a role in a number of physiologic functions, including pain perception and responses to stress.,Function:Leumorphin has a typical opiod activity and may have anti-apoptotic effect.,PTM:The N-terminal domain contains 6 conserved cysteines thought to be involved in disulfide bonding and/or processing.,similarity:Belongs to the opioid neuropeptide precursor family.,		

Validation Data



Western blot analysis of lysates from SW480 cells, primary antibody was diluted at 1:1000, 4°over night

Contact information

Orders: order@immunoway.com
Support: tech@immunoway.com
Telephone: 877-594-3616 (Toll Free), 408-747-0185
Website: <http://www.immunoway.com>
Address: 2200 Ringwood Ave San Jose, CA 95131 USA



Please scan the QR code
to access additional
product information:
PDYN Rabbit pAb

For Research Use Only. Not for Use in Diagnostic Procedures.

[Antibody](#) | [ELISA Kits](#) | [Protein](#) | [Reagents](#)