

RN135 Rabbit pAb

CatalogNo: YN2484

| Key Features

Host Species

- Rabbit

Reactivity

- Human, Mouse, Rat

Applications

- WB, ELISA

MW

- 47kD (Observed)

Isotype

- IgG

| Recommended Dilution Ratios

WB 1:500-2000

ELISA 1:5000-20000

| Storage

Storage* -15°C to -25°C/1 year (Do not lower than -25°C)

Formulation Liquid in PBS containing 50% glycerol, 0.5% BSA and 0.02% sodium azide.

| Basic Information

Clonality Polyclonal

| Immunogen Information

Immunogen Synthesized peptide derived from human protein . at AA range: 81-130

Specificity RN135 Polyclonal Antibody detects endogenous levels of protein.

| Target Information

Gene name RNF135 L13

Protein Name E3 ubiquitin-protein ligase RNF135 (RIG-I E3 ubiquitin ligase) (REUL) (RING finger protein 135) (Riplet)

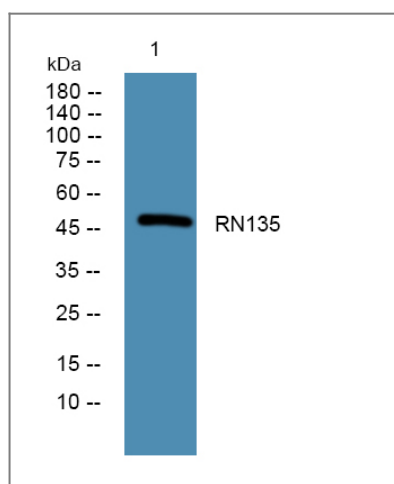
Organism	Gene ID	UniProt ID
Human	84282;	Q8IUD6;
Mouse		Q9CWS1;
Rat		Q5M929;

Cellular Localization Cytoplasm . Cytoplasm, Stress granule .

Tissue specificity Expressed in skeletal muscle, spleen, kidney, placenta, prostate, stomach, thyroid and tongue. Also weakly expressed in heart, thymus, liver and lung.

Function Disease:Defects in RNF135 are the cause of RNF135-related overgrowth syndrome. RNF135-related overgrowth syndrome is characterized by overgrowth, learning disability, dysmorphic features and variable additional features.,similarity:Contains 1 B30.2/SPRY domain.,similarity:Contains 1 RING-type zinc finger.,

Validation Data



Western blot analysis of lysates from SH-SY5Y cells, primary antibody was diluted at 1:1000, 4°over night

Contact information

Orders: order@immunoway.com
Support: tech@immunoway.com
Telephone: 877-594-3616 (Toll Free), 408-747-0185
Website: <http://www.immunoway.com>
Address: 2200 Ringwood Ave San Jose, CA 95131 USA



Please scan the QR code to access additional product information:
RN135 Rabbit pAb

