

## OREX Rabbit pAb

CatalogNo: YN2481

### | Key Features

#### Host Species

- Rabbit

#### Reactivity

- Human, Mouse, Rat

#### Applications

- WB, ELISA

#### MW

- 14kD (Observed)

#### Isotype

- IgG

### | Recommended Dilution Ratios

**WB 1:500-2000**

**ELISA 1:5000-20000**

### | Storage

**Storage\*** -15°C to -25°C/1 year (Do not lower than -25°C)

**Formulation** Liquid in PBS containing 50% glycerol, 0.5% BSA and 0.02% sodium azide.

### | Basic Information

**Clonality** Polyclonal

### | Immunogen Information

**Immunogen** Synthesized peptide derived from human protein . at AA range: 21-70

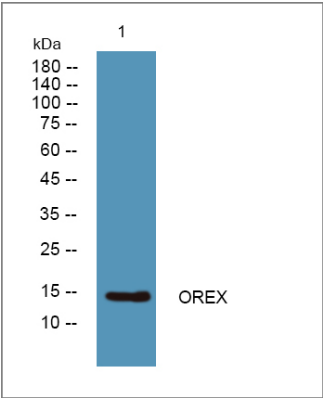
**Specificity** OREX Polyclonal Antibody detects endogenous levels of protein.

### | Target Information

**Gene name** HCRT OX PPORX PPOX

<b>Protein Name</b>	Orexin (Hypocretin) (Hcrt) [Cleaved into: Orexin-A (Hypocretin-1) (Hcrt1); Orexin-B (Hypocretin-2) (Hcrt2)]		
	<b>Organism</b>	<b>Gene ID</b>	<b>UniProt ID</b>
	Human	<a href="#">3060;</a>	<a href="#">O43612;</a>
	Mouse		<a href="#">O55241;</a>
	Rat		<a href="#">O55232;</a>
<b>Cellular Localization</b>	Rough endoplasmic reticulum . Cytoplasmic vesicle . Cell junction, synapse . Associated with perikaryal rough endoplasmic reticulum as well as cytoplasmic large granular vesicles at synapses. .		
<b>Tissue specificity</b>	Abundantly expressed in subthalamic nucleus but undetectable in other brain regions tested (hypothalamus was not tested) and in heart, placenta, lung, liver, skeletal muscle, kidney and pancreas.		
<b>Function</b>	<p>Disease:Defects in HCRT are a cause of narcolepsy [MIM:161400]. Narcolepsy is a neurological disabling sleep disorder, characterized by excessive daytime sleepiness, sleep fragmentation, symptoms of abnormal rapid-eye-movement (REM) sleep, such as cataplexy, hypnagogic hallucinations, and sleep paralysis. Cataplexy is a sudden loss of muscle tone triggered by emotions, which is the most valuable clinical feature used to diagnose narcolepsy. Human narcolepsy is associated with a deficient orexin system. Orexins are absent and/or greatly diminished in the brain and cerebrospinal fluid (CSF) of most narcoleptic patients. Human narcolepsy is primarily a sporadically occurring disorder but familial clustering has been observed.,Function:Neuropeptides that play a significant role in the regulation of food intake and sleep-wakefulness, possibly by coordinating the complex behavioral and physiologic responses of these complementary homeostatic functions. A broader role in the homeostatic regulation of energy metabolism, autonomic function, hormonal balance and the regulation of body fluids, is also suggested. Orexin-A binds to both OX1R and OX2R with a high affinity, whereas orexin-B binds only to OX2R with a similar high affinity.,online information:Qui dort dine - Issue 15 of October 2001,PTM:Specific enzymatic cleavages at paired basic residues yield the different active peptides.,similarity:Belongs to the orexin family.,subcellular location:Associated with perikaryal rough endoplasmic reticulum as well as cytoplasmic large granular vesicles at synapses.,tissue specificity:Abundantly expressed in subthalamic nucleus but undetectable in other brain regions tested (hypothalamus was not tested) and in heart, placenta, lung, liver, skeletal muscle, kidney and pancreas.,</p>		

Validation Data



Western blot analysis of lysates from PC12 cells, primary antibody was diluted at 1:1000, 4°over night

## | Contact information

Orders: order@immunoway.com  
Support: tech@immunoway.com  
Telephone: 877-594-3616 (Toll Free), 408-747-0185  
Website: <http://www.immunoway.com>  
Address: 2200 Ringwood Ave San Jose, CA 95131 USA



Please scan the QR code  
to access additional  
product information:  
**OREX Rabbit pAb**

---

For Research Use Only. Not for Use in Diagnostic Procedures.

[Antibody](#) | [ELISA Kits](#) | [Protein](#) | [Reagents](#)