

## ID3 Rabbit pAb

CatalogNo: YN2452

### | Key Features

#### Host Species

- Rabbit

#### Reactivity

- Human, Mouse, Rat

#### Applications

- WB, ELISA

#### MW

- 13kD (Observed)

#### Isotype

- IgG

### | Recommended Dilution Ratios

**WB 1:500-2000**

**ELISA 1:5000-20000**

### | Storage

**Storage\*** -15°C to -25°C/1 year (Do not lower than -25°C)

**Formulation** Liquid in PBS containing 50% glycerol, 0.5% BSA and 0.02% sodium azide.

### | Basic Information

**Clonality** Polyclonal

### | Immunogen Information

**Immunogen** Synthesized peptide derived from human protein . at AA range: 68-117

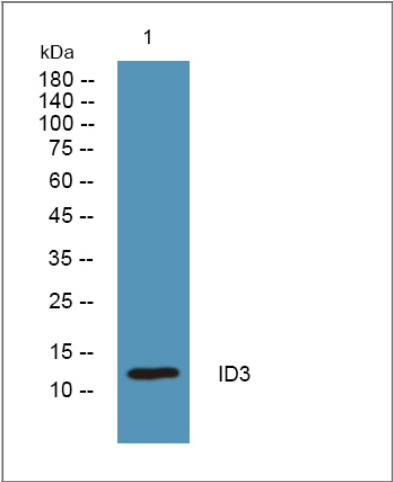
**Specificity** ID3 Polyclonal Antibody detects endogenous levels of protein.

### | Target Information

**Gene name** ID3 1R21 BHLHB25 HEIR1

|                              |  |                       |                         |
|------------------------------|--|-----------------------|-------------------------|
| <b>Protein Name</b>          | DNA-binding protein inhibitor ID-3 (Class B basic helix-loop-helix protein 25) (bHLHb25) (Helix-loop-helix protein HEIR-1) (ID-like protein inhibitor HLH 1R21) (Inhibitor of DNA binding 3)   |                       |                         |
|                              | <b>Organism</b>  | <b>Gene ID</b>        | <b>UniProt ID</b>       |
|                              | Human  | <a href="#">3399;</a> | <a href="#">Q02535;</a> |
|                              | Mouse  |                       | <a href="#">P41133;</a> |
|                              | Rat  |                       | <a href="#">P41138;</a> |
| <b>Cellular Localization</b> | Nucleus.   |                       |                         |
| <b>Tissue specificity</b>    | Expressed abundantly in lung, kidney and adrenal gland, but not in adult brain.  |                       |                         |
| <b>Function</b>              | Function:ID (inhibitor of DNA binding) HLH proteins lack a basic DNA-binding domain but are able to form heterodimers with other HLH proteins, thereby inhibiting DNA binding. ID-3 inhibits the binding of E2A-containing protein complexes to muscle creatine kinase E-box enhancer. May inhibit other transcription factors.,induction:By phorbol 12-myristate 13-acetate (PMA).,similarity:Contains 1 basic helix-loop-helix (bHLH) domain.,subunit:Interacts with COPS5 and COPS7A (By similarity). Homodimer, and heterodimer with other HLH proteins.,tissue specificity:Expressed abundantly in lung, kidney and adrenal gland, but not in adult brain., |                       |                         |

Validation Data



Western blot analysis of lysates from HCT116 cells, primary antibody was diluted at 1:1000, 4°over night

Contact information

Orders: [order@immunoway.com](mailto:order@immunoway.com)  
Support: [tech@immunoway.com](mailto:tech@immunoway.com)  
Telephone: 877-594-3616 (Toll Free), 408-747-0185  
Website: <http://www.immunoway.com>  
Address: 2200 Ringwood Ave San Jose, CA 95131 USA



Please scan the QR code  
to access additional  
product information:  
**ID3 Rabbit pAb**

---

For Research Use Only. Not for Use in Diagnostic Procedures.

[Antibody](#) | [ELISA Kits](#) | [Protein](#) | [Reagents](#)