

## ES1 Rabbit pAb

CatalogNo: YN2446

### | Key Features

#### Host Species

- Rabbit

#### Reactivity

- Human, Mouse, Rat

#### Applications

- WB, ELISA

#### MW

- 29kD (Observed)

#### Isotype

- IgG

### | Recommended Dilution Ratios

WB 1:500-2000

ELISA 1:5000-20000

### | Storage

**Storage\*** -15°C to -25°C/1 year (Do not lower than -25°C)

**Formulation** Liquid in PBS containing 50% glycerol, 0.5% BSA and 0.02% sodium azide.

### | Basic Information

**Clonality** Polyclonal

### | Immunogen Information

**Immunogen** Synthesized peptide derived from human protein . at AA range: 121-170

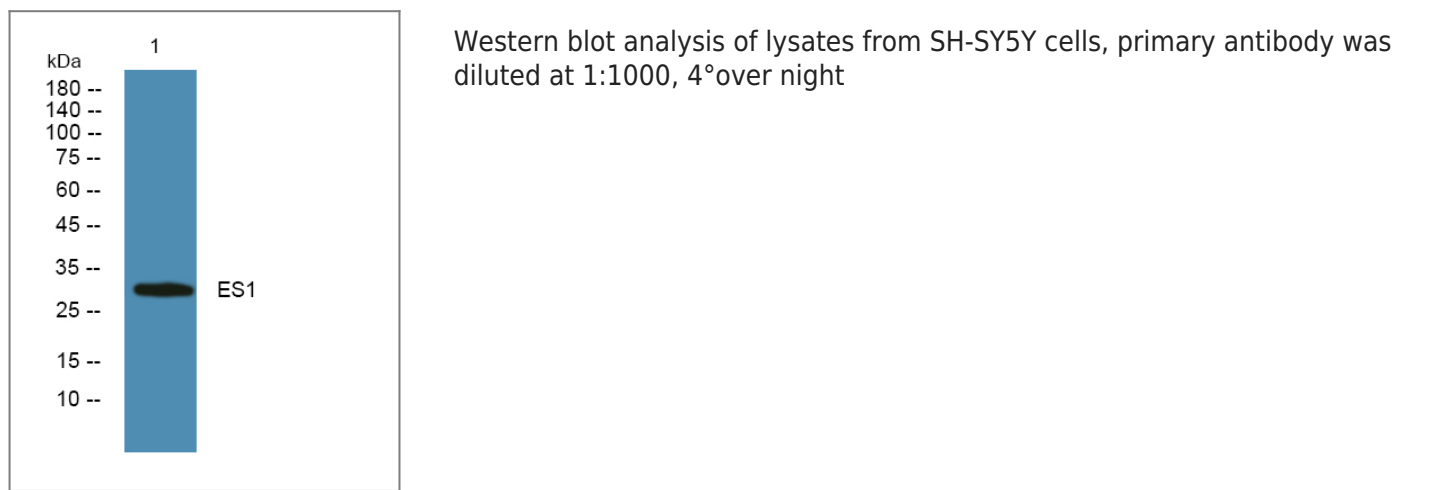
**Specificity** ES1 Polyclonal Antibody detects endogenous levels of protein.

### | Target Information

**Gene name** C21orf33 HES1 KNPI

<b>Protein Name</b>	ES1 protein homolog, mitochondrial (Protein GT335) (Protein KNP-I)		
	<b>Organism</b>	<b>Gene ID</b>	<b>UniProt ID</b>
	Human	<a href="#">8209;</a>	<a href="#">P30042;</a>
	Mouse		<a href="#">Q9D172;</a>
	Rat		<a href="#">P56571;</a>
<b>Cellular Localization</b>	mitochondrion,		
<b>Tissue specificity</b>	Brain,Cajal-Retzius cell,Liver,Lung,		
<b>Function</b>	similarity:Belongs to the ES1 family.,tissue specificity:Ubiquitous, but strongly expressed in heart and skeletal muscle.,		

## Validation Data



## Contact information

Orders: [order@immunoway.com](mailto:order@immunoway.com)  
 Support: [tech@immunoway.com](mailto:tech@immunoway.com)  
 Telephone: 877-594-3616 (Toll Free), 408-747-0185  
 Website: <http://www.immunoway.com>  
 Address: 2200 Ringwood Ave San Jose, CA 95131 USA



Please scan the QR code  
 to access additional  
 product information:  
**ES1 Rabbit pAb**