

## NRG4 Rabbit pAb

CatalogNo: YN2440

### Key Features

#### Host Species

- Rabbit

#### Reactivity

- Human, Mouse

#### Applications

- WB, ELISA

#### MW

- 12kD (Observed)

#### Isotype

- IgG

### Recommended Dilution Ratios

**WB 1:500-2000**

**ELISA 1:5000-20000**

### Storage

**Storage\*** -15°C to -25°C/1 year (Do not lower than -25°C)

**Formulation** Liquid in PBS containing 50% glycerol, and 0.02% sodium azide.

### Basic Information

**Clonality** Polyclonal

### Immunogen Information

**Immunogen** Synthesized peptide derived from human protein . at AA range: 11-60

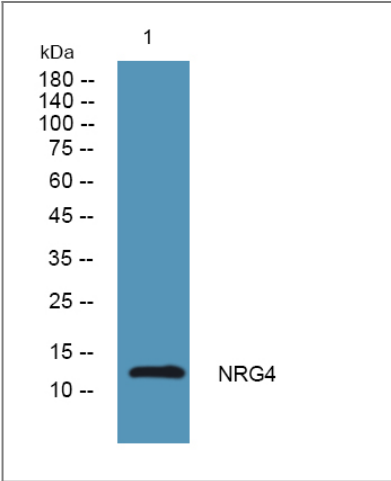
**Specificity** NRG4 Polyclonal Antibody detects endogenous levels of protein.

### Target Information

**Gene name** NRG4

<b>Protein Name</b>	Pro-neuregulin-4, membrane-bound isoform (Pro-NRG4) [Cleaved into: Neuregulin-4 (NRG-4)]		
	<b>Organism</b>	<b>Gene ID</b>	<b>UniProt ID</b>
	Human	<a href="#">145957</a> ;	<a href="#">Q8WWG1</a> ;
	Mouse		<a href="#">Q9WTX4</a> ;
<b>Cellular Localization</b>	[Pro-neuregulin-4, membrane-bound isoform]: Cell membrane ; Single-pass type I membrane protein . Does not seem to be active. . ; [Neuregulin-4]: Secreted .		
<b>Tissue specificity</b>	Breast,Liver,Prostate,		
<b>Function</b>	Domain:ERBB receptor binding is elicited entirely by the EGF-like domain.,Domain:The cytoplasmic domain may be involved in the regulation of trafficking and proteolytic processing. Regulation of the proteolytic processing involves initial intracellular domain dimerization.,Function:Low affinity ligand for the ERBB4 tyrosine kinase receptor. Concomitantly recruits ERBB1 and ERBB2 coreceptors, resulting in ligand-stimulated tyrosine phosphorylation and activation of the ERBB receptors. Does not bind to the ERBB1, ERBB2 and ERBB3 receptors.,PTM:Extensive glycosylation precedes the proteolytic cleavage.,PTM:Proteolytic cleavage close to the plasma membrane on the external face leads to the release of the soluble growth factor form.,similarity:Belongs to the neuregulin family.,similarity:Contains 1 EGF-like domain.,subcellular location:Does not seem to be active.,		

Validation Data



Western blot analysis of lysates from DU145 cells, primary antibody was diluted at 1:1000, 4°over night

Contact information

Orders: order@immunoway.com  
Support: tech@immunoway.com  
Telephone: 877-594-3616 (Toll Free), 408-747-0185  
Website: <http://www.immunoway.com>  
Address: 2200 Ringwood Ave San Jose, CA 95131 USA



Please scan the QR code  
to access additional  
product information:  
**NRG4 Rabbit pAb**

---

For Research Use Only. Not for Use in Diagnostic Procedures.

[Antibody](#) | [ELISA Kits](#) | [Protein](#) | [Reagents](#)