

## SLUR1 Rabbit pAb

CatalogNo: YN2439

### Key Features

**Host Species**

- Rabbit

**Reactivity**

- Human, Mouse

**Applications**

- WB, ELISA

**MW**

- 11kD (Observed)

**Isotype**

- IgG

### Recommended Dilution Ratios

**WB 1:500-2000****ELISA 1:5000-20000**

### Storage

**Storage\***

-15°C to -25°C/1 year (Do not lower than -25°C)

**Formulation**

Liquid in PBS containing 50% glycerol, 0.5% BSA and 0.02% sodium azide.

### Basic Information

**Clonality**

Polyclonal

### Immunogen Information

**Immunogen**

Synthesized peptide derived from human protein . at AA range: 11-60

**Specificity**

SLUR1 Polyclonal Antibody detects endogenous levels of protein.

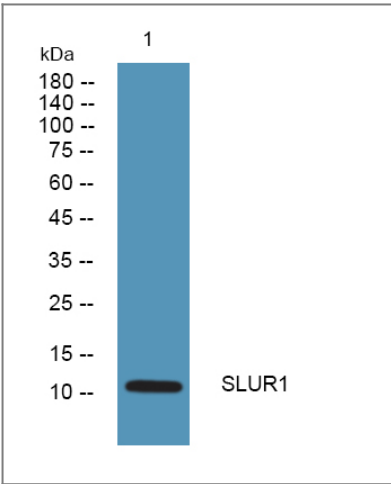
### Target Information

**Gene name**

SLURP1 ARS

<b>Protein Name</b>	Secreted Ly-6/uPAR-related protein 1 (SLURP-1) (ARS component B) (ARS(component B)-81/S) (Anti-neoplastic urinary protein) (ANUP)		
	<b>Organism</b>	<b>Gene ID</b>	<b>UniProt ID</b>
	Human	<a href="#">57152</a> ;	<a href="#">P55000</a> ;
	Mouse		<a href="#">Q9Z0K7</a> ;
<b>Cellular Localization</b>	Secreted .		
<b>Tissue specificity</b>	Granulocytes. Expressed in skin. Predominantly expressed in the granular layer of skin, notably the acrosyringium. Identified in several biological fluids such as sweat, saliva, tears, plasma and urine.		
<b>Function</b>	Caution:It is not certain that ARS and ANUP are identical proteins.,Disease:Defects in SLURP1 are a cause of Mal de Meleda (MDM) [MIM:248300]; also known as keratosis palmoplantaris transgradiens of Siemens. MDM is a rare autosomal recessive skin disorder, characterized by diffuse transgressive palmoplantar keratoderma with keratotic lesions extending onto the dorsa of the hands and the feet (transgrediens). Patients may have hyperhidrosis. Other features include perioral erythema, lichenoid plaques on the knees and the elbows, and nail abnormalities.,Function:Has an antitumor activity. Was found to be a marker of late differentiation of the skin. Implicated in maintaining the physiological and structural integrity of the keratinocyte layers of the skin.,induction:Regulated by retinoic acid, epidermal growth factor and interferon-gamma.,similarity:Contains 1 UPAR/Ly6 domain.,subunit:Homodimer.,tissue specificity:Granulocytes. Expressed in skin. Predominantly expressed in the granular layer of skin, notably the acrosyringium. Identified in several biological fluids such as sweat, saliva, tears, plasma and urine.,		

| Validation Data



Western blot analysis of lysates from A431 cells, primary antibody was diluted at 1:1000, 4°over night

| Contact information

Orders: order@immunoway.com  
Support: tech@immunoway.com  
Telephone: 877-594-3616 (Toll Free), 408-747-0185  
Website: http://www.immunoway.com  
Address: 2200 Ringwood Ave San Jose, CA 95131 USA



Please scan the QR code  
to access additional  
product information:  
**SLUR1 Rabbit pAb**

---

For Research Use Only. Not for Use in Diagnostic Procedures.

[Antibody](#) | [ELISA Kits](#) | [Protein](#) | [Reagents](#)