

FCG3B Rabbit pAb

CatalogNo: YN2414

Key Features

Host Species

- Rabbit

Reactivity

- Human

Applications

- WB,ELISA

MW

- 25kD (Observed)

Isotype

- IgG

Recommended Dilution Ratios

WB 1:500-2000

ELISA 1:5000-20000

Storage

Storage* -15°C to -25°C/1 year(Do not lower than -25°C)

Formulation Liquid in PBS containing 50% glycerol,0.5% BSA and 0.02% sodium azide.

Basic Information

Clonality Polyclonal

Immunogen Information

Immunogen Synthesized peptide derived from human protein . at AA range: 90-170

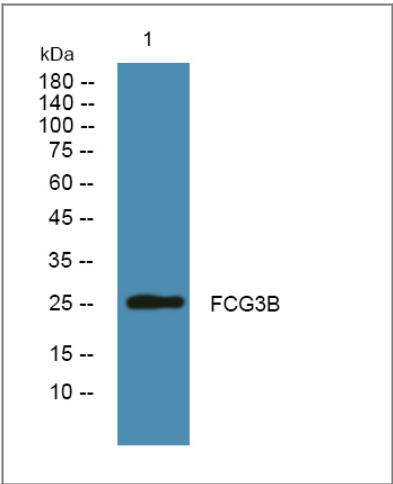
Specificity FCG3B Polyclonal Antibody detects endogenous levels of protein.

Target Information

Gene name FCGR3B CD16B FCG3 FCGR3 IGFR3

Protein Name	Low affinity immunoglobulin gamma Fc region receptor III-B (Fc-gamma RIII-beta) (Fc-gamma RIII) (Fc-gamma RIIIb) (FcRIII) (FcRIIIb) (FcR-10) (IgG Fc receptor III-1) (CD antigen CD16b)		
	Organism	Gene ID	UniProt ID
	Human	2215;	O75015;
Cellular Localization	Cell membrane ; Lipid-anchor, GPI-anchor . Secreted. Secreted after cleavage.		
Tissue specificity	Expressed specifically by polymorphonuclear leukocytes (neutrophils). Also expressed by stimulated eosinophils.		
Function	<p>Disease:The more active FCGR3B*01 allele has been associated with severe renal disease in certain systemic vasculitides.,Function:Receptor for the Fc region of immunoglobulins gamma. Low affinity receptor. Binds complexed or aggregated IgG and also monomeric IgG. Contrary to III-A, is not capable to mediate antibody-dependent cytotoxicity and phagocytosis. May serve as a trap for immune complexes in the peripheral circulation which does not activate neutrophils.,miscellaneous:Encoded by one of two nearly identical genes: FCGR3A and FCGR3B (Shown here) which are expressed in a tissue-specific manner. The Phe-203 in FCGR3A determines the transmembrane domains whereas the Ser-203 in FCGR3B determines the GPI-anchoring.,polymorphism:There are three allelic forms of FCGR3B: FCGR3B*01 (NA-1), FCGR3B*02 (HNA-1b, NA-2) (shown here) and SH. FCGR3B*01 and FCGR3B*02 are detectable with antibodies against the biallelic neutrophil-specific antigen system NA.,PTM:Glycosylated. Glycosylation plays an inhibitory role in the interaction with IgG3.,PTM:The soluble form is produced by a proteolytic cleavage.,similarity:Contains 2 Ig-like C2-type (immunoglobulin-like) domains.,subcellular location:Secreted after cleavage.,subunit:Monomer. Interacts with INPP5D/SHIP1.,tissue specificity:Expressed specifically by polymorphonuclear leukocytes (neutrophils). Also expressed by stimulated eosinophils.,</p>		

Validation Data



Western blot analysis of lysates from A431 cells, primary antibody was diluted at 1:1000, 4°over night

Contact information

Orders: order@immunoway.com
Support: tech@immunoway.com
Telephone: 877-594-3616 (Toll Free), 408-747-0185
Website: http://www.immunoway.com
Address: 2200 Ringwood Ave San Jose, CA 95131 USA



Please scan the QR code
to access additional
product information:
FCG3B Rabbit pAb

For Research Use Only. Not for Use in Diagnostic Procedures.

[Antibody](#) | [ELISA Kits](#) | [Protein](#) | [Reagents](#)