

FKBP3 Rabbit pAb

CatalogNo: YN2411

Key Features

Host Species

- Rabbit

Reactivity

- Human, Mouse

Applications

- WB, ELISA

MW

- 24kD (Observed)

Isotype

- IgG

Recommended Dilution Ratios

WB 1:500-2000

ELISA 1:5000-20000

Storage

Storage* -15°C to -25°C/1 year (Do not lower than -25°C)

Formulation Liquid in PBS containing 50% glycerol, 0.5% BSA and 0.02% sodium azide.

Basic Information

Clonality Polyclonal

Immunogen Information

Immunogen Synthesized peptide derived from human protein . at AA range: 140-220

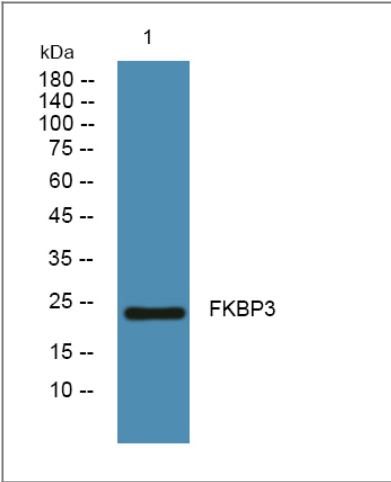
Specificity FKBP3 Polyclonal Antibody detects endogenous levels of protein.

Target Information

Gene name FKBP3 FKBP25

Protein Name	Peptidyl-prolyl cis-trans isomerase FKBP3 (PPlase FKBP3) (25 kDa FK506-binding protein) (25 kDa FKBP) (FKBP-25) (FK506-binding protein 3) (FKBP-3) (Immunophilin FKBP25) (Rapamycin-selective 25 kDa immunophilin) (Rotamase)		
	Organism	Gene ID	UniProt ID
	Human	2287 ;	Q00688 ;
	Mouse		Q62446 ;
Cellular Localization	Nucleus.		
Tissue specificity	Human small intestine,Skeletal muscle,Skin,Thymus,		
Function	Catalytic activity:Peptidylproline (omega=180) = peptidylproline (omega=0).,enzyme regulation:Inhibited preferentially by rapamycin over FK506.,Function:FK506- and rapamycin-binding proteins (FKBPs) constitute a family of receptors for the two immunosuppressants which inhibit T-cell proliferation by arresting two distinct cytoplasmic signal transmission pathways. PPlases accelerate the folding of proteins.,similarity:Belongs to the FKBP-type PPlase family.,similarity:Contains 1 PPlase FKBP-type domain.,		

Validation Data



Western blot analysis of lysates from K562 cells, primary antibody was diluted at 1:1000, 4°over night

Contact information

Orders: order@immunoway.com
Support: tech@immunoway.com
Telephone: 877-594-3616 (Toll Free), 408-747-0185
Website: http://www.immunoway.com
Address: 2200 Ringwood Ave San Jose, CA 95131 USA



Please scan the QR code to access additional product information:
FKBP3 Rabbit pAb

