

## SIAL Rabbit pAb

CatalogNo: YN2407

### Key Features

#### Host Species

- Rabbit

#### Reactivity

- Human,Rat,Mouse

#### Applications

- WB,ELISA

#### MW

- 34kD (Observed)

#### Isotype

- IgG

### Recommended Dilution Ratios

WB 1:500-2000

ELISA 1:5000-20000

### Storage

**Storage\*** -15°C to -25°C/1 year(Do not lower than -25°C)

**Formulation** Liquid in PBS containing 50% glycerol, and 0.02% sodium azide.

### Basic Information

**Clonality** Polyclonal

### Immunogen Information

**Immunogen** Synthesized peptide derived from human protein . at AA range: 230-310

**Specificity** SIAL Polyclonal Antibody detects endogenous levels of protein.

### Target Information

**Gene name** IBSP BNSP

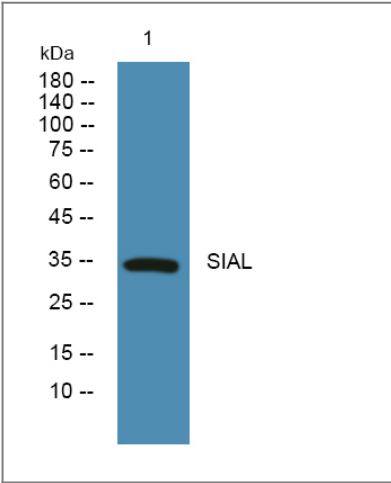
**Protein Name** Bone sialoprotein 2 (Bone sialoprotein II) (BSP II) (Cell-binding sialoprotein) (Integrin-binding sialoprotein)

Organism	Gene ID	UniProt ID
Human	<a href="#">3381</a> ;	<a href="#">P21815</a> ;
Mouse		<a href="#">Q61711</a> ;
Rat		<a href="#">P13839</a> ;

**Cellular Localization** Secreted.

**Function** Function: Binds tightly to hydroxyapatite. Appears to form an integral part of the mineralized matrix. Probably important to cell-matrix interaction. Promotes Arg-Gly-Asp-dependent cell attachment., miscellaneous: It is possible that the segments of clustered carboxyl groups mediate the strong binding to hydroxyapatite., PTM: N-glycosylated; glycans consist of sialated and core-fucosylated bi-, tri- and tetraantennary chains., PTM: O-glycosylated at eight sites; mucin-type glycans contain Gal, GlcNAc, GalNAc and terminal NeuAc., PTM: Sulfated on either Tyr-313 or Tyr-314.,

## Validation Data



Western blot analysis of lysates from PC12 cells, primary antibody was diluted at 1:1000, 4° over night

## Contact information

Orders: [order@immunoway.com](mailto:order@immunoway.com)  
Support: [tech@immunoway.com](mailto:tech@immunoway.com)  
Telephone: 877-594-3616 (Toll Free), 408-747-0185  
Website: <http://www.immunoway.com>  
Address: 2200 Ringwood Ave San Jose, CA 95131 USA



Please scan the QR code to access additional product information:  
**SIAL Rabbit pAb**

