

LST8 Rabbit pAb

CatalogNo: YN2394

Key Features

Host Species

- Rabbit

Reactivity

- Human, Mouse, Rat

Applications

- WB, ELISA

MW

- 35kD (Observed)

Isotype

- IgG

Storage

Storage* -15°C to -25°C/1 year (Do not lower than -25°C)

Formulation Liquid in PBS containing 50% glycerol, 0.5% BSA and 0.02% sodium azide.

Recommended Dilution Ratios

WB 1:500-2000

ELISA 1:5000-20000

Basic Information

Clonality Polyclonal

Immunogen Information

Immunogen Synthesized peptide derived from human protein . at AA range: 100-180

Specificity LST8 Polyclonal Antibody detects endogenous levels of protein.

Target Information

Gene name MLST8 GBL LST8

Protein Name Target of rapamycin complex subunit LST8 (TORC subunit LST8) (G protein beta subunit-like) (Gable) (Protein GbetaL) (Mammalian lethal with SEC13 protein 8) (mLST8)

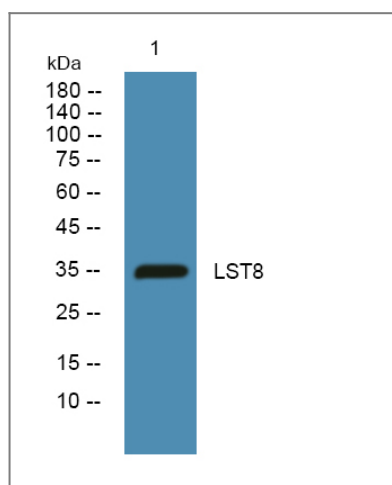
Organism	Gene ID	UniProt ID
Human	64223 ;	Q9BVC4 ;
Mouse		Q9DCJ1 ;
Rat		Q9Z2K5 ;

Cellular Localization Cytoplasm .

Tissue specificity Broadly expressed, with highest levels in skeletal muscle, heart and kidney.

Function Function:Unessential component of the TORC1 complex and essential component of the TORC2 complex. TORC1 controls cell growth in response to environmental signals, and is inactivated by nutrient limitation and environmental stress. Within TORC1, LST8 interacts directly with FRAP1 and enhances its kinase activity. In nutrient-poor conditions, stabilizes the FRAP1-RAPTOR interaction and favors RAPTOR-mediated inhibition of FRAP1 activity. TORC2 controls polarity of the actin cytoskeleton via the RAC1 pathway. TORC2 mediates phosphorylation of Akt/PKB on 'Ser-473' and phosphorylation of PKCalpha on 'Ser-657'. ,similarity:Belongs to the WD repeat LST8 family. ,similarity:Contains 7 WD repeats. ,subunit:Interacts with FRAP1, RAPTOR and RHEB. Part of the target of rapamycin complex 1 (TORC1) which contains LST8, FRAP1, RAPTOR and AKT1S1. TORC1 binds to and is inhibited by FKBP12-rapamycin. Part of the target of rapamycin complex 2 (TORC2) which contains FRAP1, LST8, PROTOR1, RICTOR and MAPKAP1. Contrary to TORC1, TORC2 does not bind to and is not sensitive to FKBP12-rapamycin. ,tissue specificity:Broadly expressed, with highest levels in skeletal muscle, heart and kidney. ,

Validation Data



Western blot analysis of lysates from SW480 cells, primary antibody was diluted at 1:1000, 4° over night

Contact information

Orders: order@immunoway.com
Support: tech@immunoway.com
Telephone: 877-594-3616 (Toll Free), 408-747-0185
Website: http://www.immunoway.com
Address: 2200 Ringwood Ave San Jose, CA 95131 USA



Please scan the QR code
to access additional
product information:
LST8 Rabbit pAb

For Research Use Only. Not for Use in Diagnostic Procedures.

[Antibody](#) | [ELISA Kits](#) | [Protein](#) | [Reagents](#)