

HECAM Rabbit pAb

CatalogNo: YN2377

Orthogonal Validated 

Key Features

Host Species

- Rabbit

Reactivity

- Human, Mouse

Applications

- WB, ELISA

MW

- 45kD (Observed)

Isotype

- IgG

Recommended Dilution Ratios

WB 1:500-2000**ELISA 1:5000-20000**

Storage

Storage*

-15°C to -25°C/1 year (Do not lower than -25°C)

Formulation

Liquid in PBS containing 50% glycerol, and 0.02% sodium azide.

Basic Information

Clonality

Polyclonal

Immunogen Information

Immunogen

Synthesized peptide derived from human protein . at AA range: 10-90

Specificity

HECAM Polyclonal Antibody detects endogenous levels of protein.

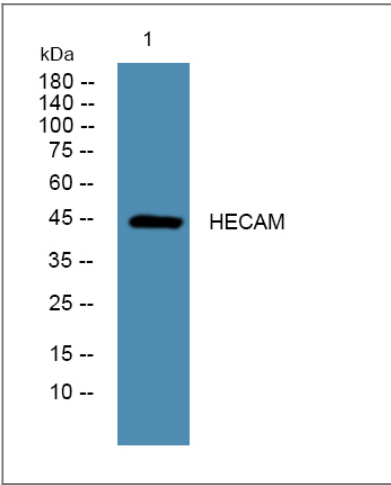
Target Information

Gene name

HEPACAM

Protein Name	Hepatocyte cell adhesion molecule (Protein hepaCAM)		
	Organism	Gene ID	UniProt ID
	Human	220296;	Q14CZ8;
	Mouse		Q640R3;
Cellular Localization	Cytoplasm . Membrane; Single-pass type I membrane protein; Cytoplasmic side . In MCF-7 breast carcinoma and hepatic Hep 3B2.1-7 and Hep-G2 cell lines, localization of HEPACAM is cell density-dependent. In well spread cells, localized to punctate structures in the perinuclear membrane, cytoplasm, and at cell surface of protusions. In confluent cells, localized predominantly to the cytoplasmic membrane, particularly in areas of cell-cell contacts. Colocalizes with CDH1.		
Tissue specificity	Brain,Fetal brain,Hypothalamus,Liver,		
Function	Caution:Product of a dubious CDS prediction. Encoded by the 3'-UTR of HEPACAM.,Domain:The cytoplasmic domain plays an important role in regulation of cell-matrix adhesion and cell motility.,Function:Involved in regulating cell motility and cell-matrix interactions. May inhibit cell growth through suppression of cell proliferation.,induction:Down-regulated in 20 out of 23 of hepatocellular carcinoma (HCC) samples and is undetectable in 5 HCC cell lines tested.,PTM:N-glycosylated.,similarity:Contains 1 Ig-like C2-type (immunoglobulin-like) domain.,similarity:Contains 1 Ig-like V-type (immunoglobulin-like) domain.,subcellular location:In MCF7 breast carcinoma and hepatic Hep3B and HepG2 cell lines, localization of HEPACAM is cell density-dependent. In well spread cells, localized to punctate structures in the perinuclear membrane, cytoplasm, and at cell surface of protusions. In confluent cells, localized predominantly to the cytoplasmic membrane, particularly in areas of cell-cell contacts. Colocalizes with CDH1.,subunit:Homodimer. Dimer formation occurs predominantly through cis interactions on the cell surface.,tissue specificity:Expressed in liver. Expression is either downregulated or lost in hepatocellular carcinomas (HCC).,		

| Validation Data



Western blot analysis of lysates from HCT116 cells, primary antibody was diluted at 1:1000, 4°over night

| Contact information

Orders: order@immunoway.com
Support: tech@immunoway.com
Telephone: 877-594-3616 (Toll Free), 408-747-0185
Website: <http://www.immunoway.com>
Address: 2200 Ringwood Ave San Jose, CA 95131 USA



Please scan the QR code
to access additional
product information:
HECAM Rabbit pAb

For Research Use Only. Not for Use in Diagnostic Procedures.

[Antibody](#) | [ELISA Kits](#) | [Protein](#) | [Reagents](#)