

TRML1 Rabbit pAb

CatalogNo: YN2358

Key Features

Host Species

- Rabbit

Reactivity

- Human, Mouse

Applications

- WB, ELISA

MW

- 34kD (Observed)

Isotype

- IgG

Recommended Dilution Ratios

WB 1:500-2000

ELISA 1:5000-20000

Storage

Storage* -15°C to -25°C/1 year (Do not lower than -25°C)

Formulation Liquid in PBS containing 50% glycerol, 0.5% BSA and 0.02% sodium azide.

Basic Information

Clonality Polyclonal

Immunogen Information

Immunogen Synthesized peptide derived from human protein . at AA range: 30-110

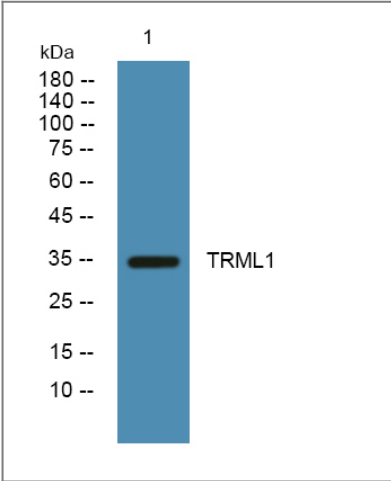
Specificity TRML1 Polyclonal Antibody detects endogenous levels of protein.

Target Information

Gene name TREML1 TLT1 UNQ1825/PRO3438

Protein Name	Trem-like transcript 1 protein (TLT-1) (Triggering receptor expressed on myeloid cells-like protein 1)		
	Organism	Gene ID	UniProt ID
	Human	340205;	Q86YW5;
	Mouse		Q8K558;
Cellular Localization	Cell membrane ; Single-pass type I membrane protein . Cytoplasm . Sequestered in cytoplasmic vesicles in resting platelets (PubMed:15100151). Transported to the cell surface after stimulation by thrombin (PubMed:15100151). Soluble fragments can be released into the serum by proteolysis (PubMed:16505478).		
Tissue specificity	Detected in platelets, monocytic leukemia and in T-cell leukemia.		
Function	Function:Cell surface receptor that may play a role in the innate and adaptive immune response.,PTM:Phosphorylated on tyrosine residues.,similarity:Contains 1 Ig-like V-type (immunoglobulin-like) domain.,subcellular location:Sequestered in cytoplasmic vesicles in resting platelets. Transported to the cell surface after stimulation by thrombin. Soluble fragments can be released into the serum by proteolysis.,subunit:When phosphorylated, interacts with PTPN6 (By similarity). When phosphorylated, interacts with PTPN11.,tissue specificity:Detected in platelets, monocytic leukemia and in T-cell leukemia.,		

Validation Data



Western blot analysis of lysates from DU145 cells, primary antibody was diluted at 1:1000, 4°over night

Contact information

Orders: order@immunoway.com
 Support: tech@immunoway.com
 Telephone: 877-594-3616 (Toll Free), 408-747-0185
 Website: <http://www.immunoway.com>
 Address: 2200 Ringwood Ave San Jose, CA 95131 USA



Please scan the QR code
 to access additional
 product information:
TRML1 Rabbit pAb

