

## CHIP Rabbit pAb

CatalogNo: YN2355

### Key Features

#### Host Species

- Rabbit

#### Reactivity

- Human, Mouse

#### Applications

- WB, ELISA

#### MW

- 33kD (Observed)

#### Isotype

- IgG

### Recommended Dilution Ratios

**WB 1:500-2000**

**ELISA 1:5000-20000**

### Storage

**Storage\*** -15°C to -25°C/1 year (Do not lower than -25°C)

**Formulation** Liquid in PBS containing 50% glycerol, and 0.02% sodium azide.

### Basic Information

**Clonality** Polyclonal

### Immunogen Information

**Immunogen** Synthesized peptide derived from human protein . at AA range: 160-240

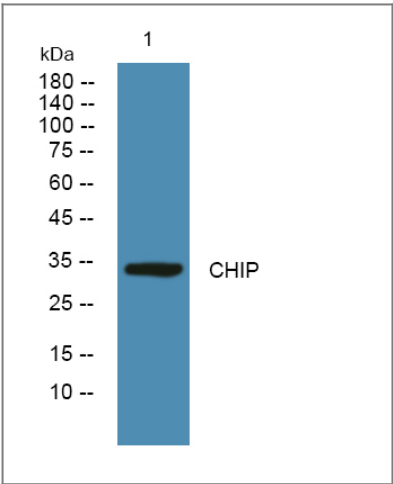
**Specificity** CHIP Polyclonal Antibody detects endogenous levels of protein.

### Target Information

**Gene name** STUB1 CHIP PP1131

<b>Protein Name</b>	E3 ubiquitin-protein ligase CHIP (Antigen NY-CO-7) (CLL-associated antigen KW-8) (Carboxy terminus of Hsp70-interacting protein) (STIP1 homology and U box-containing protein 1)		
	<b>Organism</b>	<b>Gene ID</b>	<b>UniProt ID</b>
	Human	<a href="#">10273</a> ;	<a href="#">Q9UNE7</a> ;
	Mouse		<a href="#">Q9WUD1</a> ;
<b>Cellular Localization</b>	Cytoplasm . Nucleus . Translocates to the nucleus in response to inflammatory signals in regulatory T-cells (Treg). .		
<b>Tissue specificity</b>	Expressed in differentiated myotubes (at protein level) (PubMed:17369820). Highly expressed in skeletal muscle, heart, pancreas, brain and placenta (PubMed:10330192, PubMed:11435423). Detected in kidney, liver and lung (PubMed:10330192, PubMed:11435423).		
<b>Function</b>	Disease:Antibodies against STUB1 are found in patients with chronic lymphocytic leukemia (CLL) and in colorectal cancer patients.,Function:Modulates the activity of several chaperone complexes, including Hsp70, Hsc70 and Hsp90. Has E3 ubiquitin-protein ligase activity and targets misfolded chaperone substrates towards proteasomal degradation. Mediates transfer of non-canonical short ubiquitin chains to HSPA8 that have no effect on HSPA8 degradation.,PTM:Auto-ubiquitinated (in vitro).,PTM:Phosphorylated upon DNA damage, probably by ATM or ATR.,similarity:Contains 1 U-box domain.,similarity:Contains 3 TPR repeats.,subunit:Interacts with BAG2, and with the E2 ubiquitin conjugating enzymes UBE2D1, UBE2D2 and UBE2D3. Interacts with the C-terminal domains of HSPA8 and HSPA1A. Detected in a ternary complex containing STUB1, HSPA1A and HSPBP1.,tissue specificity:Highly expressed in skeletal muscle, heart, pancreas, brain and placenta. Detected in kidney, liver and lung.,		

## Validation Data



Western blot analysis of lysates from PC12 cells, primary antibody was diluted at 1:1000, 4°over night

## Contact information

Orders: order@immunoway.com  
Support: tech@immunoway.com  
Telephone: 877-594-3616 (Toll Free), 408-747-0185  
Website: <http://www.immunoway.com>  
Address: 2200 Ringwood Ave San Jose, CA 95131 USA



Please scan the QR code  
to access additional  
product information:  
**CHIP Rabbit pAb**

---

For Research Use Only. Not for Use in Diagnostic Procedures.

[Antibody](#) | [ELISA Kits](#) | [Protein](#) | [Reagents](#)