

## HBEGF Rabbit pAb

CatalogNo: YN2310

Orthogonal Validated 

### Key Features

**Host Species**

- Rabbit

**Reactivity**

- Human,Rat,Mouse

**Applications**

- WB,ELISA

**MW**

- 22kD (Observed)

**Isotype**

- IgG

### Recommended Dilution Ratios

**WB 1:500-2000****ELISA 1:5000-20000**

### Storage

**Storage\***

-15°C to -25°C/1 year(Do not lower than -25°C)

**Formulation**

Liquid in PBS containing 50% glycerol,0.5% BSA and 0.02% sodium azide.

### Basic Information

**Clonality**

Polyclonal

### Immunogen Information

**Immunogen**

Synthesized peptide derived from human protein . at AA range: 130-210

**Specificity**

HBEGF Polyclonal Antibody detects endogenous levels of protein.

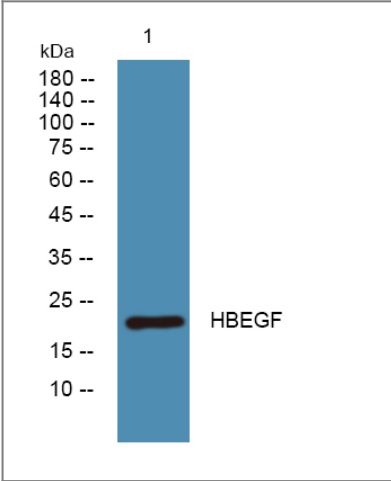
### Target Information

**Gene name**

HBEGF DTR DTS HEGFL

<b>Protein Name</b>	Proheparin-binding EGF-like growth factor [Cleaved into: Heparin-binding EGF-like growth factor (HB-EGF) (HBEGF) (Diphtheria toxin receptor) (DT-R)]		
	<b>Organism</b>	<b>Gene ID</b>	<b>UniProt ID</b>
	Human	<a href="#">1839;</a>	<a href="#">Q99075;</a>
	Mouse		<a href="#">Q06186;</a>
	Rat		<a href="#">Q06175;</a>
<b>Cellular Localization</b>	[Heparin-binding EGF-like growth factor]: Secreted, extracellular space. Mature HB-EGF is released into the extracellular space and probably binds to a receptor.; [Proheparin-binding EGF-like growth factor]: Cell membrane; Single-pass type I membrane protein.		
<b>Tissue specificity</b>	Brain, Eye, Histiocytic lymphoma, Macrophage,		
<b>Function</b>	Function: May be involved in macrophage-mediated cellular proliferation. It is mitogenic for fibroblasts and smooth muscle but not endothelial cells. It is able to bind EGF receptors with higher affinity than EGF itself and is a far more potent mitogen for smooth muscle cells than EGF. Also acts as a diphtheria toxin receptor., PTM: O-linked glycan attachment sites were determined by Edman degradation, O-glycanase digest suggests mucin-type glycosylation (done in HB-EGF purified from histiocytic lymphoma cell line U-937)., PTM: Several N-termini have been identified by direct sequencing. The forms with N-termini 63, 73 and 74 have been tested and found to be biologically active., similarity: Contains 1 EGF-like domain., subcellular location: Mature HB-EGF is released into the extracellular space and probably binds to a receptor.,		

Validation Data



Western blot analysis of lysates from K562 cells, primary antibody was diluted at 1:1000, 4°over night

Contact information

Orders: order@immunoway.com  
Support: tech@immunoway.com  
Telephone: 877-594-3616 (Toll Free), 408-747-0185  
Website: http://www.immunoway.com  
Address: 2200 Ringwood Ave San Jose, CA 95131 USA



Please scan the QR code  
to access additional  
product information:  
**HBEGF Rabbit pAb**

---

For Research Use Only. Not for Use in Diagnostic Procedures.

[Antibody](#) | [ELISA Kits](#) | [Protein](#) | [Reagents](#)