

## DKK4 Rabbit pAb

CatalogNo: YN2301

### Key Features

#### Host Species

- Rabbit

#### Reactivity

- Human, Mouse

#### Applications

- WB, ELISA

#### MW

- 24kD (Observed)

#### Isotype

- IgG

### Recommended Dilution Ratios

**WB 1:500-2000**

**ELISA 1:5000-20000**

### Storage

**Storage\*** -15°C to -25°C/1 year (Do not lower than -25°C)

**Formulation** Liquid in PBS containing 50% glycerol, 0.5% BSA and 0.02% sodium azide.

### Basic Information

**Clonality** Polyclonal

### Immunogen Information

**Immunogen** Synthesized peptide derived from human protein . at AA range: 150-230

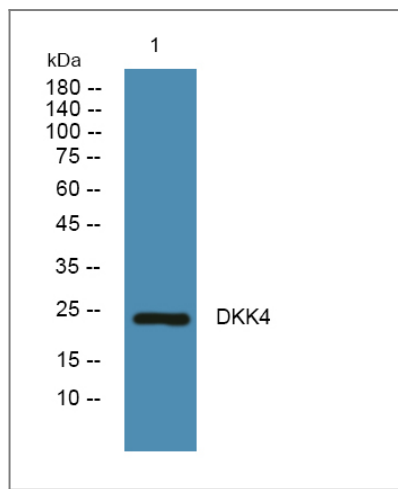
**Specificity** DKK4 Polyclonal Antibody detects endogenous levels of protein.

### Target Information

**Gene name** DKK4

<b>Protein Name</b>	Dickkopf-related protein 4 (Dickkopf-4) (Dkk-4) (hDkk-4) [Cleaved into: Dickkopf-related protein 4 short form]		
	<b>Organism</b>	<b>Gene ID</b>	<b>UniProt ID</b>
	Human	<a href="#">27121;</a>	<a href="#">Q9UBT3;</a>
	Mouse		<a href="#">Q8VEJ3;</a>
<b>Cellular Localization</b>	Secreted.		
<b>Tissue specificity</b>	Expressed in cerebellum, T-cells, esophagus and lung.		
<b>Function</b>	Function:Inhibitor of Wnt signaling pathway.,PTM:Appears to be not glycosylated.,PTM:Can be proteolytically processed by a furin-like protease.,similarity:Belongs to the dickkopf family.,tissue specificity:Expressed in cerebellum, T-cells, esophagus and lung.,		

## | Validation Data



Western blot analysis of lysates from U2OS cells, primary antibody was diluted at 1:1000, 4°over night

## | Contact information

Orders:           order@immunoway.com  
Support:         tech@immunoway.com  
Telephone:       877-594-3616 (Toll Free), 408-747-0185  
Website:         http://www.immunoway.com  
Address:         2200 Ringwood Ave San Jose, CA 95131 USA



Please scan the QR code to access additional product information:  
**DKK4 Rabbit pAb**