

PRS27 Rabbit pAb

CatalogNo: YN2289

Key Features

Host Species

- Rabbit

Reactivity

- Human,Rat,Mouse

Applications

- WB,ELISA

MW

- 31kD (Observed)

Isotype

- IgG

Recommended Dilution Ratios

WB 1:500-2000

ELISA 1:5000-20000

Storage

Storage* -15°C to -25°C/1 year(Do not lower than -25°C)

Formulation Liquid in PBS containing 50% glycerol,0.5% BSA and 0.02% sodium azide.

Basic Information

Clonality Polyclonal

Immunogen Information

Immunogen Synthesized peptide derived from human protein . at AA range: 30-110

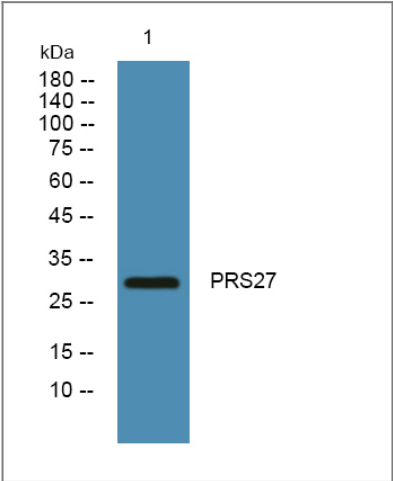
Specificity PRS27 Polyclonal Antibody detects endogenous levels of protein.

Target Information

Gene name PRSS27 MPN UNQ1884/PRO4327

Protein Name	Serine protease 27 (Marapsin) (Pancreasin)		
	Organism	Gene ID	UniProt ID
	Human	83886;	Q9BQR3;
	Mouse		Q8BJR6;
	Rat		Q6BEA2;
Cellular Localization	Secreted.		
Tissue specificity	Expressed predominantly in the pancreas.		
Function	PTM:N-glycosylated.,similarity:Belongs to the peptidase S1 family.,similarity:Contains 1 peptidase S1 domain.,tissue specificity:Expressed predominantly in the pancreas.,		

| Validation Data



Western blot analysis of lysates from K562 cells, primary antibody was diluted at 1:1000, 4°over night

| Contact information

Orders: order@immunoway.com
Support: tech@immunoway.com
Telephone: 877-594-3616 (Toll Free), 408-747-0185
Website: http://www.immunoway.com
Address: 2200 Ringwood Ave San Jose, CA 95131 USA



Please scan the QR code to access additional product information:
PRS27 Rabbit pAb