

EPYC Rabbit pAb

CatalogNo: YN2271

Key Features

Host Species

- Rabbit

Reactivity

- Human, Mouse

Applications

- WB, ELISA

MW

- 35kD (Observed)

Isotype

- IgG

Recommended Dilution Ratios

WB 1:500-2000

ELISA 1:5000-20000

Storage

Storage* -15°C to -25°C/1 year (Do not lower than -25°C)

Formulation Liquid in PBS containing 50% glycerol, 0.5% BSA and 0.02% sodium azide.

Basic Information

Clonality Polyclonal

Immunogen Information

Immunogen Synthesized peptide derived from human protein . at AA range: 140-220

Specificity EPYC Polyclonal Antibody detects endogenous levels of protein.

Target Information

Gene name EPYC DSPG3 PGLB SLRR3B

Protein Name Epiphykan (Dermatan sulfate proteoglycan 3) (Proteoglycan-Lb) (PG-Lb) (Small chondroitin/dermatan sulfate proteoglycan)

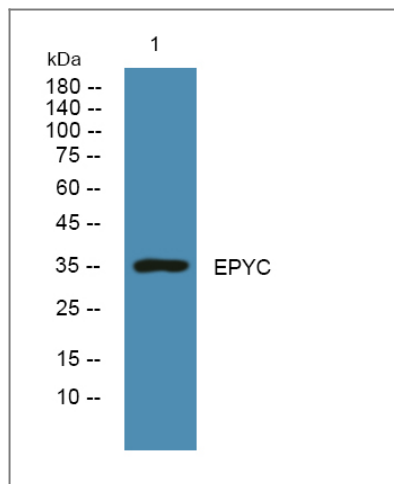
Organism	Gene ID	UniProt ID
Human	1833 ;	Q99645 ;
Mouse		P70186 ;

Cellular Localization Secreted, extracellular space, extracellular matrix .

Tissue specificity Cartilage, ligament, and placenta.

Function Function:May have a role in bone formation and also in establishing the ordered structure of cartilage through matrix organization.,PTM:The O-linked polysaccharides on Thr-60 and Ser-96 are probably the mucin type linked to GalNAc. There is one glycosaminoglycan chain, known to be dermatan sulfate, and it is probably the O-glycosylation at Ser-64.,similarity:Belongs to the small leucine-rich proteoglycan (SLRP) family. Class III subfamily.,similarity:Contains 7 LRR (leucine-rich) repeats.,tissue specificity:Cartilage, ligament, and placenta.,

Validation Data



Western blot analysis of lysates from PC12 cells, primary antibody was diluted at 1:1000, 4° over night

Contact information

Orders: order@immunoway.com
Support: tech@immunoway.com
Telephone: 877-594-3616 (Toll Free), 408-747-0185
Website: <http://www.immunoway.com>
Address: 2200 Ringwood Ave San Jose, CA 95131 USA



Please scan the QR code to access additional product information:
EPYC Rabbit pAb

