

## DKKL1 Rabbit pAb

CatalogNo: YN2247

### Key Features

#### Host Species

- Rabbit

#### Reactivity

- Human, Mouse

#### Applications

- WB, ELISA

#### MW

- 26kD (Observed)

#### Isotype

- IgG

### Recommended Dilution Ratios

WB 1:500-2000

ELISA 1:5000-20000

### Storage

**Storage\*** -15°C to -25°C/1 year (Do not lower than -25°C)

**Formulation** Liquid in PBS containing 50% glycerol, 0.5% BSA and 0.02% sodium azide.

### Basic Information

**Clonality** Polyclonal

### Immunogen Information

**Immunogen** Synthesized peptide derived from human protein . at AA range: 50-130

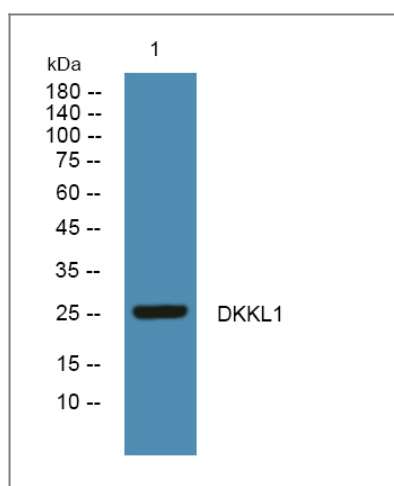
**Specificity** DKKL1 Polyclonal Antibody detects endogenous levels of protein.

### Target Information

**Gene name** DKKL1 SGY1 UNQ735/PRO1429

<b>Protein Name</b>	Dickkopf-like protein 1 (Cancer/testis antigen 34) (CT34) (Protein soggy-1) (SGY-1)		
	<b>Organism</b>	<b>Gene ID</b>	<b>UniProt ID</b>
	Human	<a href="#">27120;</a>	<a href="#">Q9UK85;</a>
	Mouse		<a href="#">Q9QZL9;</a>
<b>Cellular Localization</b>	Secreted . Cytoplasmic vesicle, secretory vesicle, acrosome . Localized specifically to the crescent shaped acrosome at the apex of the sperm head. .		
<b>Tissue specificity</b>	More highly expressed in adult testis than in fetal testis. Exclusively expressed in the testis (at protein level). Intense expression in stages II, III and IV of spermatogenesis, whereas expression is lower in stage I.		
<b>Function</b>	PTM:N-glycosylated.,similarity:To the N-terminal section of DKK-3.,		

## Validation Data



Western blot analysis of lysates from K562 cells, primary antibody was diluted at 1:1000, 4°over night

## Contact information

Orders: [order@immunoway.com](mailto:order@immunoway.com)  
 Support: [tech@immunoway.com](mailto:tech@immunoway.com)  
 Telephone: 877-594-3616 (Toll Free), 408-747-0185  
 Website: <http://www.immunoway.com>  
 Address: 2200 Ringwood Ave San Jose, CA 95131 USA



Please scan the QR code to access additional product information:  
**DKKL1 Rabbit pAb**