

HAVCR2 Rabbit pAb

CatalogNo: YN2240

Key Features

Host Species

- Rabbit

Reactivity

- Human, Mouse

Applications

- WB, ELISA

MW

- 33kD (Observed)

Isotype

- IgG

Recommended Dilution Ratios

WB 1:500-2000

ELISA 1:5000-20000

Storage

Storage* -15°C to -25°C/1 year (Do not lower than -25°C)

Formulation Liquid in PBS containing 50% glycerol, 0.5% BSA and 0.02% sodium azide.

Basic Information

Clonality Polyclonal

Immunogen Information

Immunogen Synthesized peptide derived from human protein . at AA range: 10-90

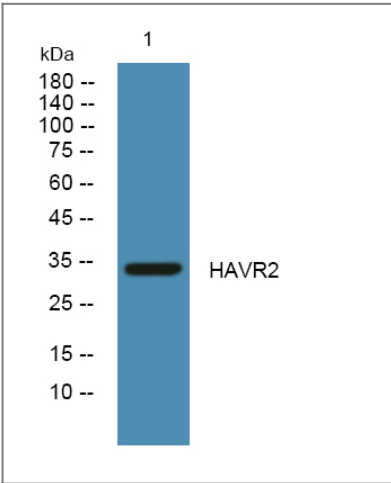
Specificity HAVR2 Polyclonal Antibody detects endogenous levels of protein.

Target Information

Gene name HAVCR2 TIM3 TIMD3

Protein Name	Hepatitis A virus cellular receptor 2 (HAVcr-2) (T-cell immunoglobulin and mucin domain-containing protein 3) (TIMD-3) (T-cell membrane protein 3) (TIM-3)		
	Organism	Gene ID	UniProt ID
	Human	84868;	Q8TDQ0;
	Mouse		Q8VIM0;
Cellular Localization	Membrane ; Single-pass type I membrane protein . Cell junction . Cell membrane . Localizes to the immunological synapse between CD8+ T-cells and target cells. .		
Tissue specificity	Expressed in T-helper type 1 (Th1) lymphocytes. Expressed on regulatory T (Treg) cells after TCR stimulation. Expressed in dendritic cells and natural killer (NK) cells. Expressed in epithelial tissues. Expression is increased on CD4+ and CD8+ T-cells in chronic hepatitis C virus (HCV) infection. In progressive HIV-1 infection, expression is up-regulated on HIV-1-specific CD8 T-cells.		
Function	Disease:Genetic variation in HAVCR2 may influence susceptibility to rheumatoid arthritis (RA) [MIM:180300]. RA is an inflammatory disease, primarily of the joints, with autoimmune features and a complex genetic component. It is characterized by inflammation of synovial tissues and the formation of rheumatoid pannus, which is capable of eroding adjacent cartilage and bone, causing subsequent joint destruction.,Function:Regulates macrophage activation. Inhibits T-helper type 1 lymphocyte (Th1)-mediated auto- and alloimmune responses and promotes immunological tolerance. May be also involved in T-cell homing. Receptor for LGALS9.,similarity:Belongs to the immunoglobulin superfamily. TIM family.,similarity:Contains 1 Ig-like V-type (immunoglobulin-like) domain.,tissue specificity:T-helper type 1 lymphocyte (Th1)-specific.,		

Validation Data



Western blot analysis of lysates from K562 cells, primary antibody was diluted at 1:1000, 4°over night

Contact information

Orders: order@immunoway.com
Support: tech@immunoway.com
Telephone: 877-594-3616 (Toll Free), 408-747-0185
Website: http://www.immunoway.com
Address: 2200 Ringwood Ave San Jose, CA 95131 USA



Please scan the QR code
to access additional
product information:
HAVCR2 Rabbit pAb

For Research Use Only. Not for Use in Diagnostic Procedures.

[Antibody](#) | [ELISA Kits](#) | [Protein](#) | [Reagents](#)