

## KI2L4 Rabbit pAb

CatalogNo: YN2220

### Key Features

#### Host Species

- Rabbit

#### Reactivity

- Human

#### Applications

- WB,ELISA

#### MW

- 41kD (Observed)

#### Isotype

- IgG

### Recommended Dilution Ratios

**WB 1:500-2000**

**ELISA 1:5000-20000**

### Storage

**Storage\*** -15°C to -25°C/1 year(Do not lower than -25°C)

**Formulation** Liquid in PBS containing 50% glycerol,0.5% BSA and 0.02% sodium azide.

### Basic Information

**Clonality** Polyclonal

### Immunogen Information

**Immunogen** Synthesized peptide derived from human protein . at AA range: 280-360

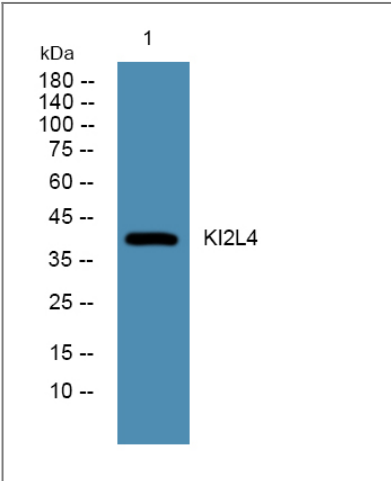
**Specificity** KI2L4 Polyclonal Antibody detects endogenous levels of protein.

### Target Information

**Gene name** KIR2DL4 CD158D KIR103AS

<b>Protein Name</b>	Killer cell immunoglobulin-like receptor 2DL4 (CD158 antigen-like family member D) (G9P) (Killer cell inhibitory receptor 103AS) (KIR-103AS) (MHC class I NK cell receptor KIR103AS) (CD antigen CD158d)		
	<b>Organism</b>	<b>Gene ID</b>	<b>UniProt ID</b>
	Human	<a href="#">3805;</a>	<a href="#">Q99706;</a>
<b>Cellular Localization</b>	Cell membrane; Single-pass type I membrane protein. Early endosome membrane .		
<b>Tissue specificity</b>	Expressed in decidual NK cells and innate lymphoid cell type I (ILC1) (PubMed:29262349). Expressed in a subset of peripheral NK cells (PubMed:19304799).		
<b>Function</b>	Function:Receptor on natural killer (NK) cells for HLA-C alleles. Inhibits the activity of NK cells thus preventing cell lysis.,similarity:Belongs to the immunoglobulin superfamily.,similarity:Contains 2 Ig-like C2-type (immunoglobulin-like) domains.,		

Validation Data



Western blot analysis of lysates from SW480 cells, primary antibody was diluted at 1:1000, 4°over night

Contact information

Orders: order@immunoway.com  
Support: tech@immunoway.com  
Telephone: 877-594-3616 (Toll Free), 408-747-0185  
Website: http://www.immunoway.com  
Address: 2200 Ringwood Ave San Jose, CA 95131 USA



Please scan the QR code to access additional product information:  
**KI2L4 Rabbit pAb**