

LECT2 Rabbit pAb

CatalogNo: YN2204

| Key Features

Host Species

- Rabbit

Reactivity

- Human, Mouse

Applications

- WB, ELISA

MW

- 16kD (Observed)

Isotype

- IgG

| Recommended Dilution Ratios

WB 1:500-2000

ELISA 1:5000-20000

| Storage

Storage* -15°C to -25°C/1 year (Do not lower than -25°C)

Formulation Liquid in PBS containing 50% glycerol, and 0.02% sodium azide.

| Basic Information

Clonality Polyclonal

| Immunogen Information

Immunogen Synthesized peptide derived from part region of human protein

Specificity LECT2 Polyclonal Antibody detects endogenous levels of protein.

| Target Information

Gene name LECT2

Protein Name Leukocyte cell-derived chemotaxin-2 (LECT-2) (hLECT2)

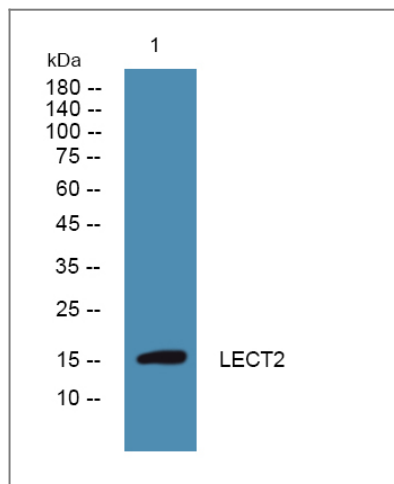
Organism	Gene ID	UniProt ID
Human	3950;	O14960;
Mouse		O88803;

Cellular Localization Cytoplasm . Secreted .

Tissue specificity Highly expressed in adult and fetal liver and weakly in testis. Not expressed in bone marrow.

Function Function:Has a neutrophil chemotactic activity. Also a positive regulator of chondrocyte proliferation.,induction:By phytohemagglutinin (PHA).,similarity:Belongs to the LECT2/MIM-1 family.,tissue specificity:Highly expressed in adult and fetal liver and weakly in testis. Not expressed in bone marrow.,

Validation Data



Western blot analysis of lysates from K562 cells, primary antibody was diluted at 1:1000, 4° over night

Contact information

Orders: order@immunoway.com
Support: tech@immunoway.com
Telephone: 877-594-3616 (Toll Free), 408-747-0185
Website: <http://www.immunoway.com>
Address: 2200 Ringwood Ave San Jose, CA 95131 USA



Please scan the QR code to access additional product information:
LECT2 Rabbit pAb