

RAP1A Rabbit pAb

CatalogNo: YN2181

| Key Features

Host Species

- Rabbit

Reactivity

- Human,Rat,Mouse

Applications

- WB,ELISA

MW

- 20kD (Observed)

Isotype

- IgG

| Recommended Dilution Ratios

WB 1:500-2000

ELISA 1:5000-20000

| Storage

Storage* -15°C to -25°C/1 year(Do not lower than -25°C)

Formulation Liquid in PBS containing 50% glycerol, and 0.02% sodium azide.

| Basic Information

Clonality Polyclonal

| Immunogen Information

Immunogen Synthesized peptide derived from part region of human protein

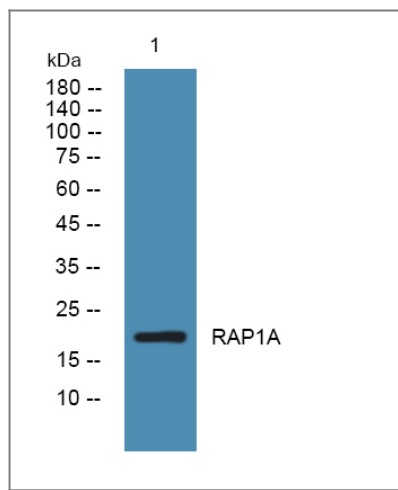
Specificity RAP1A Polyclonal Antibody detects endogenous levels of protein.

| Target Information

Gene name RAP1A KREV1

Protein Name	Ras-related protein Rap-1A (C21KG) (G-22K) (GTP-binding protein smg p21A) (Ras-related protein Krev-1)		
	Organism	Gene ID	UniProt ID
	Human	5906;	P62834;
	Mouse		P62835;
	Rat		P62836;
Cellular Localization	Cell membrane ; Lipid-anchor . Cytoplasm . Cytoplasm, perinuclear region . Cell junction . Early endosome . Recruited from early endosome to late endosome compartment after nerve growth factor (NGF) stimulation. Localized with RAPGEF2 at cell-cell junctions (By similarity). Colocalized with RAPGEF2 in the perinuclear region. .		
Tissue specificity	Brain,Platelet,Skin,Uterus,		
Function	enzyme regulation:Activated by guanine nucleotide-exchange factors (GEF) EPAC and EPAC2 in a cAMP-dependent manner, and GFR.,Function:Induces morphological reversion of a cell line transformed by a Ras oncogene. Counteracts the mitogenic function of Ras, at least partly because it can interact with Ras GAPs and RAF in a competitive manner.,similarity:Belongs to the small GTPase superfamily. Ras family.,subunit:In its GTP-bound form interacts with PLCE1 and RADIL. Interacts with SGSM1, SGSM2 and SGSM3.,		

| Validation Data



Western blot analysis of lysates from DU145 cells, primary antibody was diluted at 1:1000, 4°over night

| Contact information

Orders: order@immunoway.com
Support: tech@immunoway.com
Telephone: 877-594-3616 (Toll Free), 408-747-0185
Website: http://www.immunoway.com
Address: 2200 Ringwood Ave San Jose, CA 95131 USA



Please scan the QR code to access additional product information:
RAP1A Rabbit pAb

