

PORIM Rabbit pAb

CatalogNo: YN2175

| Key Features

Host Species

- Rabbit

Reactivity

- Human,Rat,Mouse

Applications

- WB,ELISA

MW

- 22kD (Observed)

Isotype

- IgG

| Recommended Dilution Ratios

WB 1:500-2000

ELISA 1:5000-20000

| Storage

Storage* -15°C to -25°C/1 year(Do not lower than -25°C)

Formulation Liquid in PBS containing 50% glycerol,0.5% BSA and 0.02% sodium azide.

| Basic Information

Clonality Polyclonal

| Immunogen Information

Immunogen Synthesized peptide derived from part region of human protein

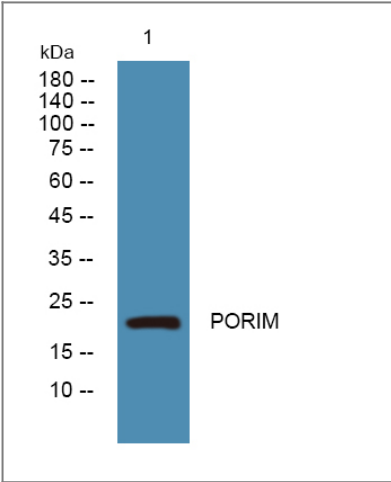
Specificity PORIM Polyclonal Antibody detects endogenous levels of protein.

| Target Information

Gene name TMEM123 KCT3 PSEC0111 UNQ641/PRO1271

Protein Name	Porimin (Keratinocytes-associated transmembrane protein 3) (KCT-3) (Pro-oncosis receptor inducing membrane injury) (Transmembrane protein 123)		
	Organism	Gene ID	UniProt ID
	Human	114908;	Q8N131;
	Mouse		Q91Z22;
	Rat		Q5HZB0;
Cellular Localization	Membrane ; Single-pass type I membrane protein .		
Tissue specificity	Ubiquitous. Not expressed in ovary. Expressed in keratinocytes.		
Function	Function:Implicated in oncotic cell death, characterized by cell swelling, organelle swelling, vacuolization and increased membrane permeability.,similarity:Belongs to the CD164 family.,tissue specificity:Ubiquitous. Not expressed in ovary. Expressed in keratinocytes.,		

| Validation Data



Western blot analysis of lysates from PC12 cells, primary antibody was diluted at 1:1000, 4°over night

| Contact information

Orders: order@immunoway.com
Support: tech@immunoway.com
Telephone: 877-594-3616 (Toll Free), 408-747-0185
Website: http://www.immunoway.com
Address: 2200 Ringwood Ave San Jose, CA 95131 USA



Please scan the QR code to access additional product information:
PORIM Rabbit pAb

