

## SPIT2 Rabbit pAb

CatalogNo: YN2152

### Key Features

**Host Species**

- Rabbit

**Reactivity**

- Human, Mouse

**Applications**

- WB, ELISA

**MW**

- 27kD (Observed)

**Isotype**

- IgG

### Recommended Dilution Ratios

**WB 1:500-2000****ELISA 1:5000-20000**

### Storage

**Storage\*** -15°C to -25°C/1 year (Do not lower than -25°C)**Formulation** Liquid in PBS containing 50% glycerol, 0.5% BSA and 0.02% sodium azide.

### Basic Information

**Clonality** Polyclonal

### Immunogen Information

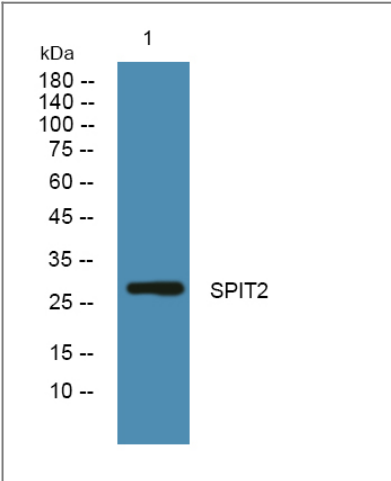
**Immunogen** Synthesized peptide derived from part region of human protein**Specificity** SPIT2 Polyclonal Antibody detects endogenous levels of protein.

### Target Information

**Gene name** SPINT2 HAI2 KOP

<b>Protein Name</b>	Kunitz-type protease inhibitor 2 (Hepatocyte growth factor activator inhibitor type 2) (HAI-2) (Placental bikunin)		
	<b>Organism</b>	<b>Gene ID</b>	<b>UniProt ID</b>
	Human	<a href="#">10653</a> ;	<a href="#">O43291</a> ;
	Mouse		<a href="#">Q9WU03</a> ;
<b>Cellular Localization</b>	Membrane ; Single-pass type I membrane protein .		
<b>Tissue specificity</b>	Expressed in placenta, kidney, pancreas, prostate, testis, thymus, and trachea.		
<b>Function</b>	Domain:This inhibitor contains two inhibitory domains.,Function:Inhibitor of HGF activator. Also inhibits plasmin, plasma and tissue kallikrein, and factor XIa.,similarity:Contains 1 BPTI/Kunitz inhibitor domain.,similarity:Contains 2 BPTI/Kunitz inhibitor domains.,tissue specificity:Expressed in placenta, kidney, pancreas, prostate, testis, thymus, and trachea.,		

| Validation Data



Western blot analysis of lysates from K562 cells, primary antibody was diluted at 1:1000, 4°over night

| Contact information

Orders: order@immunoway.com  
Support: tech@immunoway.com  
Telephone: 877-594-3616 (Toll Free), 408-747-0185  
Website: http://www.immunoway.com  
Address: 2200 Ringwood Ave San Jose, CA 95131 USA



Please scan the QR code to access additional product information:  
**SPIT2 Rabbit pAb**