

KLK5 Rabbit pAb

CatalogNo: YN2151

Key Features

Host Species

- Rabbit

Reactivity

- Human

Applications

- WB,ELISA

MW

- 32kD (Observed)

Isotype

- IgG

Storage

Storage* -15°C to -25°C/1 year(Do not lower than -25°C)

Formulation Liquid in PBS containing 50% glycerol,0.5% BSA and 0.02% sodium azide.

Recommended Dilution Ratios

WB 1:500-2000

ELISA 1:5000-20000

Basic Information

Clonality Polyclonal

Immunogen Information

Immunogen Synthesized peptide derived from part region of human protein

Specificity KLK5 Polyclonal Antibody detects endogenous levels of protein.

Target Information

Gene name KLK5 SCTE UNQ570/PRO1132

Protein Name Kallikrein-5 (Kallikrein-like protein 2) (KLK-L2) (Stratum corneum tryptic enzyme)

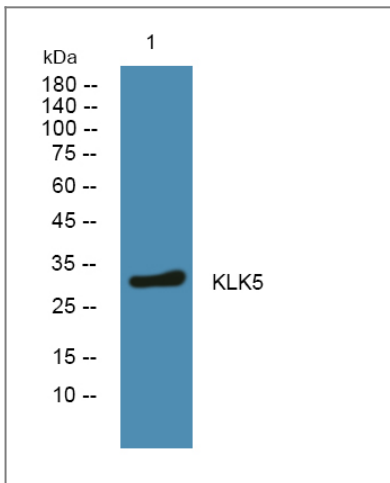
Organism	Gene ID	UniProt ID
Human	25818;	Q9Y337;

Cellular Localization Secreted.

Tissue specificity Expressed in skin, breast, brain and testis. Expressed at the stratum granulosum of palmar skin.

Function Function:May be involved in desquamation.,similarity:Belongs to the peptidase S1 family.,similarity:Belongs to the peptidase S1 family. Kallikrein subfamily.,similarity:Contains 1 peptidase S1 domain.,tissue specificity:Expressed in skin, breast, brain and testis.,

Validation Data



Western blot analysis of lysates from DU145 cells, primary antibody was diluted at 1:1000, 4° over night

Contact information

Orders: order@immunoway.com
Support: tech@immunoway.com
Telephone: 877-594-3616 (Toll Free), 408-747-0185
Website: <http://www.immunoway.com>
Address: 2200 Ringwood Ave San Jose, CA 95131 USA



Please scan the QR code to access additional product information:
KLK5 Rabbit pAb