

RETNB Rabbit pAb

CatalogNo: YN2134

Key Features

Host Species

- Rabbit

Reactivity

- Human, Mouse

Applications

- WB, ELISA

MW

- 12kD (Observed)

Isotype

- IgG

Recommended Dilution Ratios

WB 1:500-2000

ELISA 1:5000-20000

Storage

Storage* -15°C to -25°C/1 year (Do not lower than -25°C)

Formulation Liquid in PBS containing 50% glycerol, 0.5% BSA and 0.02% sodium azide.

Basic Information

Clonality Polyclonal

Immunogen Information

Immunogen Synthesized peptide derived from part region of human protein AA range: 1-50

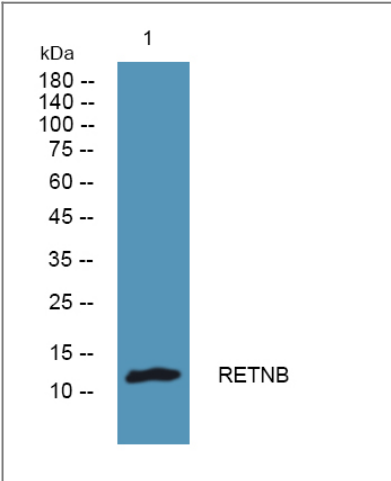
Specificity RETNB Polyclonal Antibody detects endogenous levels of protein.

Target Information

Gene name RETNLB CCRG FIZZ2 HXCP2 RETNL2 UNQ408/PRO770

Protein Name	Resistin-like beta (Colon and small intestine-specific cysteine-rich protein) (Colon carcinoma-related gene protein) (Cysteine-rich secreted protein A12-alpha-like 1) (Cysteine-rich secreted protein FIZZ2) (RELMbeta)		
	Organism	Gene ID	UniProt ID
	Human	84666;	Q9BQ08;
	Mouse		Q99P86;
Cellular Localization	Secreted.		
Tissue specificity	Expressed only in the gastrointestinal tract, particularly the colon.		
Function	Function:Probable hormone.,similarity:Belongs to the resistin/FIZZ family.,subunit:Homodimer; disulfide-linked.,tissue specificity:Expressed only in the gastrointestinal tract, particularly the colon.,		

| Validation Data



Western blot analysis of lysates from K562 cells, primary antibody was diluted at 1:1000, 4°over night

| Contact information

Orders: order@immunoway.com
 Support: tech@immunoway.com
 Telephone: 877-594-3616 (Toll Free), 408-747-0185
 Website: <http://www.immunoway.com>
 Address: 2200 Ringwood Ave San Jose, CA 95131 USA



Please scan the QR code
 to access additional
 product information:
RETNB Rabbit pAb