

GBLP Rabbit pAb

CatalogNo: YN2123

| Key Features

Host Species

- Rabbit

Reactivity

- Human,Rat,Mouse

Applications

- WB,ELISA

MW

- 34kD (Observed)

Isotype

- IgG

| Recommended Dilution Ratios

WB 1:500-2000

ELISA 1:5000-20000

| Storage

Storage* -15°C to -25°C/1 year(Do not lower than -25°C)

Formulation Liquid in PBS containing 50% glycerol,0.5% BSA and 0.02% sodium azide.

| Basic Information

Clonality Polyclonal

| Immunogen Information

Immunogen Synthesized peptide derived from part region of human protein

Specificity GBLP Polyclonal Antibody detects endogenous levels of protein.

| Target Information

Gene name GNB2L1 HLC7 PIG21

Protein Name Guanine nucleotide-binding protein subunit beta-2-like 1 (Cell proliferation-inducing gene 21 protein) (Guanine nucleotide-binding protein subunit beta-like protein 12.3) (Human lung cancer oncogene 7 protein) (HLC-7) (Receptor for activated C kinase) (Receptor of activated protein kinase C 1) (RACK1)

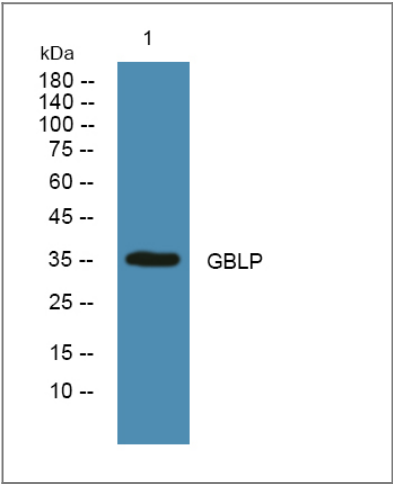
Organism	Gene ID	UniProt ID
Human	10399 ;	P63244 ;
Mouse		P68040 ;
Rat		P63245 ;

Cellular Localization Cell membrane ; Peripheral membrane protein. Cytoplasm . Cytoplasm, perinuclear region . Nucleus . Perikaryon . Cell projection, dendrite . Cell projection, phagocytic cup . Recruited to the plasma membrane through interaction with KRT1 which binds to membrane-bound ITGB1 (PubMed:17956333). Also associated with the membrane in oncogene-transformed cells (PubMed:11884618). PKC activation induces translocation from the perinuclear region to the cell periphery (PubMed:11279199). In the brain, detected mainly in cell bodies and dendrites with little expression in axonal fibers or nuclei (By similarity). Localized to phagocytic cups following infection by Y.pestis (PubMed:21347310). .

Tissue specificity In the liver, expressed at higher levels in activated hepatic stellate cells than in hepatocytes or Kupffer cells. Up-regulated in hepatocellular carcinomas and in the adjacent non-tumor liver tissue.

Function Domain:The WD repeats domain 5 mediates interaction with TRIM63.,Function:Seems to bind protein kinase C acting as an intracellular receptor to anchor the activated PKC to the cytoskeleton. May be involved in up-regulation of the activity of kinases such as PKC via binding to KRT1. Together with KRT1 and ITGB1, serves as a platform for SRC activation or inactivation. May play an important role in the developing brain and neuronal differentiation.,similarity:Belongs to the WD repeat G protein beta family.,similarity:Contains 7 WD repeats.,subcellular location:Located on plasma membrane of neuroblastoma NMB7 cells.,subunit:Binds SLC9A3R1. Forms a ternary complex with TRIM63 and PRKCE. Interacts with HABP4 and KRT1.,

Validation Data



Western blot analysis of lysates from SW480 cells, primary antibody was diluted at 1:1000, 4°over night

| Contact information

Orders: order@immunoway.com
Support: tech@immunoway.com
Telephone: 877-594-3616 (Toll Free), 408-747-0185
Website: <http://www.immunoway.com>
Address: 2200 Ringwood Ave San Jose, CA 95131 USA



Please scan the QR code
to access additional
product information:
GBLP Rabbit pAb

For Research Use Only. Not for Use in Diagnostic Procedures.

[Antibody](#) | [ELISA Kits](#) | [Protein](#) | [Reagents](#)