

## PTPRM Rabbit pAb

CatalogNo: YN2112

Orthogonal Validated 

### Key Features

**Host Species**

- Rabbit

**Reactivity**

- Human, Mouse

**Applications**

- WB, ELISA

**MW**

- 159kD (Observed)

**Isotype**

- IgG

### Recommended Dilution Ratios

**WB 1:500-2000****ELISA 1:5000-20000**

### Storage

**Storage\*** -15°C to -25°C/1 year (Do not lower than -25°C)**Formulation** Liquid in PBS containing 50% glycerol, 0.5% BSA and 0.02% sodium azide.

### Basic Information

**Clonality** Polyclonal

### Immunogen Information

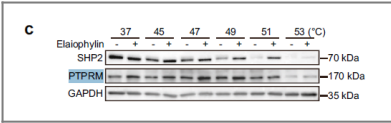
**Immunogen** Synthesized peptide derived from part region of human protein. AA range 21-61**Specificity** PTPRM Polyclonal Antibody detects endogenous levels of protein.

### Target Information

**Gene name** PTPRM PTPRL1

<b>Protein Name</b>	Receptor-type tyrosine-protein phosphatase mu (Protein-tyrosine phosphatase mu) (R-PTP-mu) (EC 3.1.3.48)		
	<b>Organism</b>	<b>Gene ID</b>	<b>UniProt ID</b>
	Human	<a href="#">5797;</a>	<a href="#">P28827;</a>
	Mouse		<a href="#">P28828;</a>
<b>Cellular Localization</b>	Cell membrane ; Single-pass type I membrane protein. Localizes in regions of cell-cell contact. .		
<b>Tissue specificity</b>	Brain,Clones donated by RIKEN,Plasma,Testis,		
<b>Function</b>	Catalytic activity:Protein tyrosine phosphate + H(2)O = protein tyrosine + phosphate.,Function:Involved in cell-cell adhesion through homophilic interactions. May play a key role in signal transduction and growth control.,similarity:Belongs to the protein-tyrosine phosphatase family. Receptor class 2B subfamily.,similarity:Contains 1 Ig-like C2-type (immunoglobulin-like) domain.,similarity:Contains 1 MAM domain.,similarity:Contains 1 tyrosine-protein phosphatase domain.,similarity:Contains 2 tyrosine-protein phosphatase domains.,similarity:Contains 4 fibronectin type-III domains.,		

Validation Data



Elaiophyllin triggers paraptosis and preferentially kills ovarian cancer drug-resistant cells by inducing MAPK hyperactivation Signal Transduction and Targeted Therapy Yong Fang WB Human

Contact information

Orders: order@immunoway.com  
Support: tech@immunoway.com  
Telephone: 877-594-3616 (Toll Free), 408-747-0185  
Website: http://www.immunoway.com  
Address: 2200 Ringwood Ave San Jose, CA 95131 USA



Please scan the QR code to access additional product information:  
**PTPRM Rabbit pAb**

For Research Use Only. Not for Use in Diagnostic Procedures.

[Antibody](#) | [ELISA Kits](#) | [Protein](#) | [Reagents](#)