

OPT Rabbit pAb

CatalogNo: YN1965

| Key Features

Host Species

- Rabbit

Reactivity

- Human, Mouse

Applications

- WB, ELISA

MW

- 36kD (Observed)

Isotype

- IgG

| Recommended Dilution Ratios

WB 1:500-2000

ELISA 1:5000-20000

| Storage

Storage* -15°C to -25°C/1 year (Do not lower than -25°C)

Formulation Liquid in PBS containing 50% glycerol, and 0.02% sodium azide.

| Basic Information

Clonality Polyclonal

| Immunogen Information

Immunogen Synthesized peptide derived from part region of human protein

Specificity OPT Polyclonal Antibody detects endogenous levels of protein.

| Target Information

Gene name OPTC OPT

Protein Name Opticin (Oculoglycan)

Organism

Gene ID

UniProt ID

Human

[26254;](#)

[Q9UBM4;](#)

Mouse

[Q920A0;](#)

**Cellular
Localization**

Secreted, extracellular space, extracellular matrix .

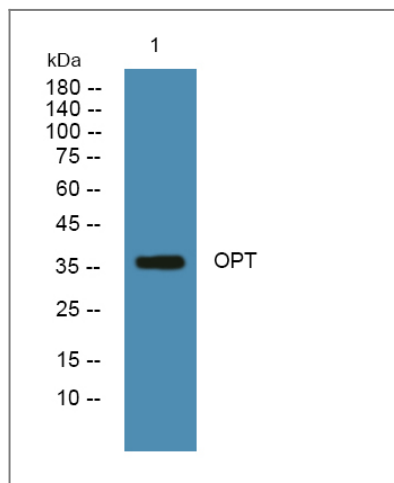
Tissue specificity

Expressed in cartilage and synovial membranes (at protein level) (PubMed:18164633, PubMed:23845380). Expressed in the retina, iris, ligament, skin and fetal liver (at protein level) (PubMed:12019215, PubMed:25136834). Expressed in the retinal pigment epithelium (at protein level) (PubMed:25136834). Expressed in synovial fibroblasts and subchondral bone osteoblasts (PubMed:18164633).

Function

Function: Binds collagen fibrils., PTM: O-glycosylated., similarity: Belongs to the small leucine-rich proteoglycan (SLRP) family. Class III subfamily., similarity: Contains 7 LRR (leucine-rich) repeats., tissue specificity: Retina, iris, ligament, skin and fetal liver.,

Validation Data



Western blot analysis of lysates from PC12 cells, primary antibody was diluted at 1:1000, 4° over night

Contact information

Orders: order@immunoway.com
Support: tech@immunoway.com
Telephone: 877-594-3616 (Toll Free), 408-747-0185
Website: <http://www.immunoway.com>
Address: 2200 Ringwood Ave San Jose, CA 95131 USA



Please scan the QR code to access additional product information:
OPT Rabbit pAb

